

The Black River Pathway



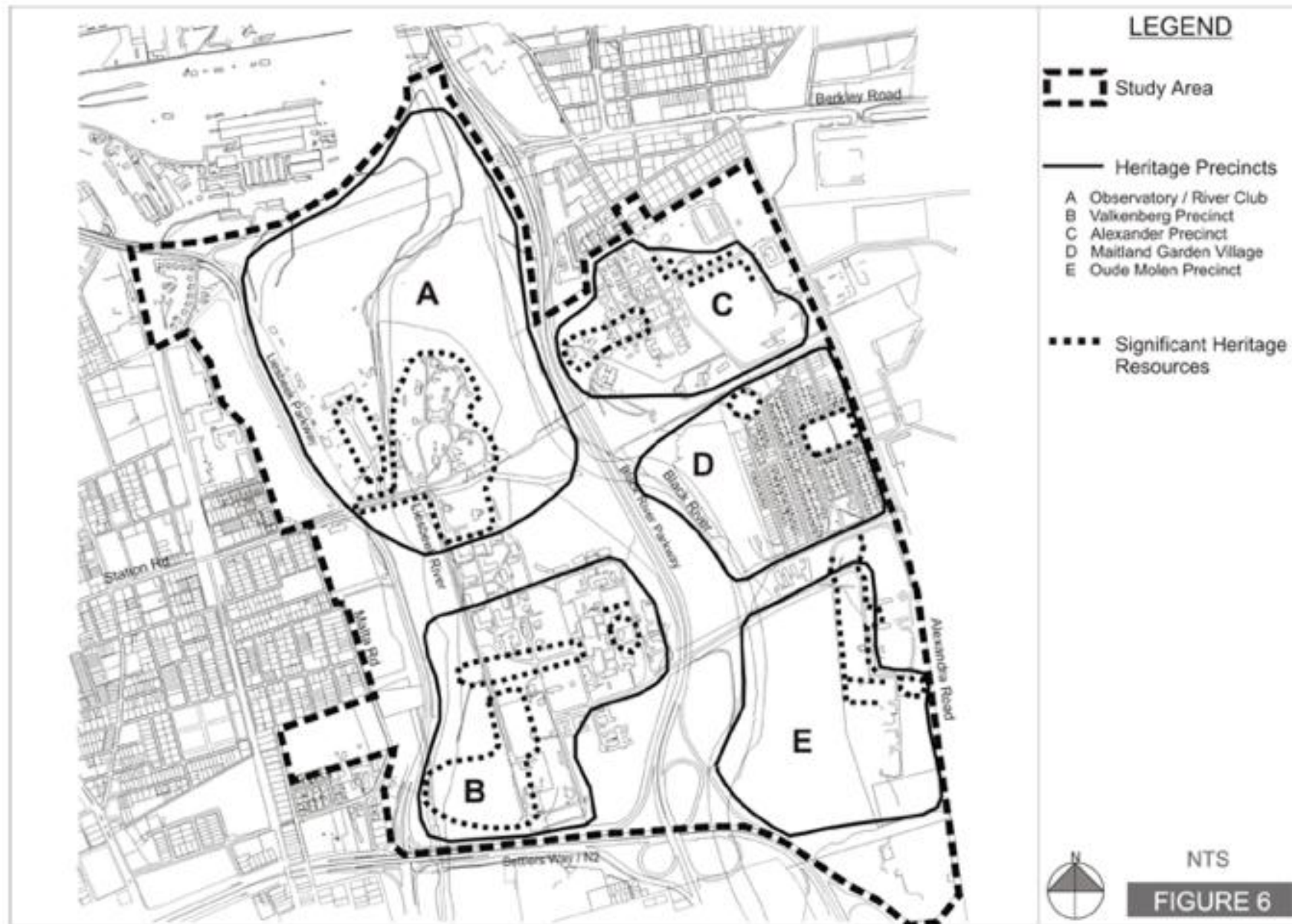
**RIVER RESTORATION AND COMMUNITY
REVITALIZATION THROUGH
SOCIOECONOMIC DEVELOPMENT**

Sarah Thayer, Caitlin Donovan, Tara Meinck, &
Shahbaz Soofi





TWO RIVERS URBAN PARK SDF AND PHASE 1 MANAGEMENT PLAN: SIGNIFICANT HERITAGE RESOURCES



Community and Sponsor Relationship

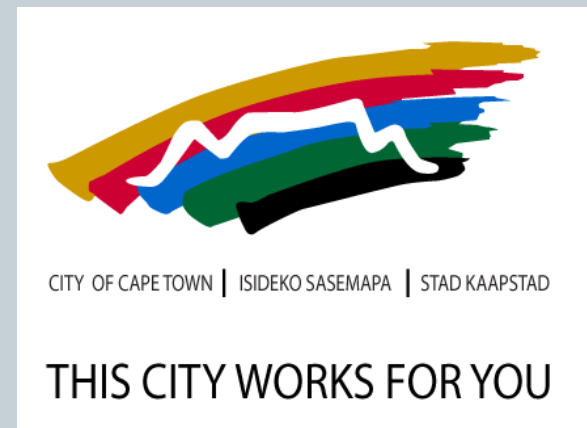
Community projects reflect common goals

- MGV
 - Community Gardens
 - Green Light Project
- OMEV
 - Food Garden Village



Environmental & Heritage Management

- Interest in heritage
- Long-term ecological restoration

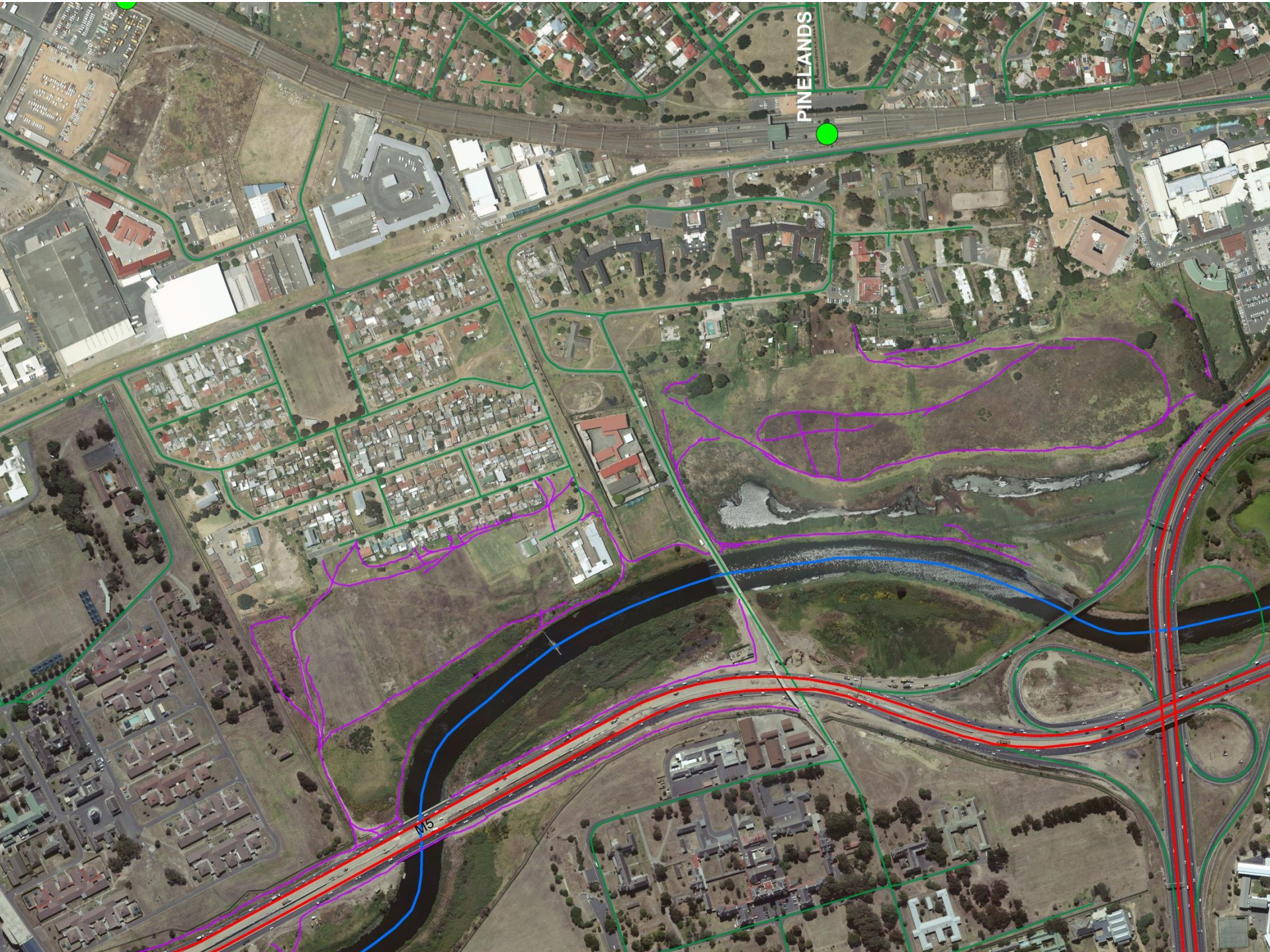


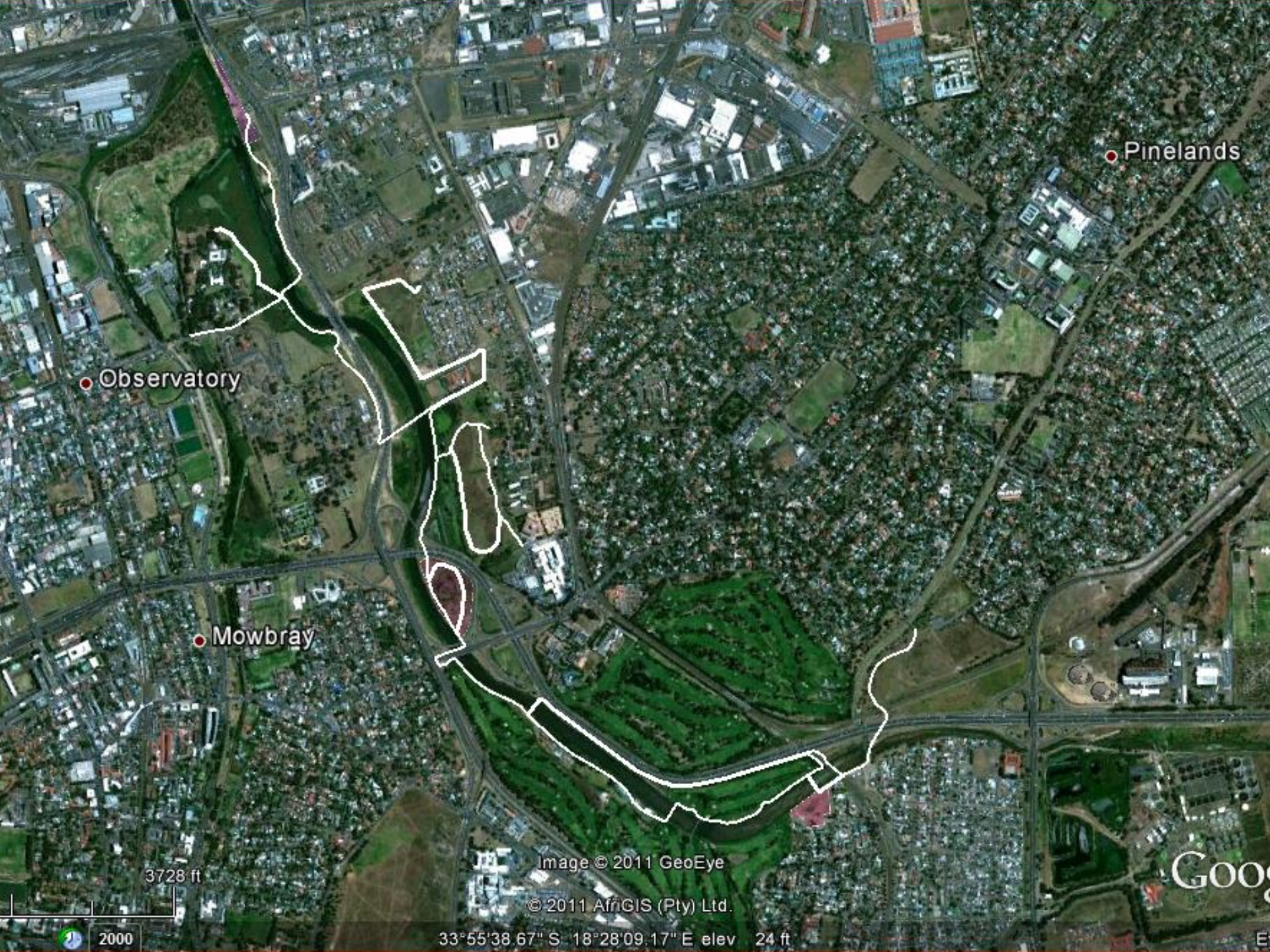
Where do we fit in?



- Develop communities' and sponsor's pathway visions
- Catalyse working relationships between stakeholders
- Explore heritage opportunities







Pinelands

Observatory

Mowbray

3728 ft

Image © 2011 GeoEye

© 2011 AfrGIS (Pty) Ltd.

33°55'38.67" S 18°28'09.17" E elev 24 ft

Google



2000



PINELANDS

2011 WPI
Pathway Proposal

2011 WPI
Pathway Proposal

M5

N2

M5

Heritage

- Possible recognition as heritage zone
 - Unique building structure
 - Rich history
 - ✦ Agriculture
 - ✦ Garden Competition
- Our focus
 - Agriculture
 - Walking tours



Agriculture

- **Goals**

- Skill development
- Business planning
- Integrate into pathway
- Highlight heritage

- **Agricultural Models**

- Community supported agriculture
- Community gardens
- Vegetable box scheme



Community Gardens



Walking tours

- Highlight heritage features
- Employ community members
- Bring revenue to local businesses
- Stimulate interest in river



Interpretive Signage

- Aid walking tours
- Themes for interpretive signage:
 - Historical significance
 - ✦ Agriculture
 - ✦ Community
 - ✦ Buildings
 - Plant species
 - Food gardens





Alexandra Hospital

Maitland Garden
Village

Old Bridge
Location

M5 Highway

Connecting:

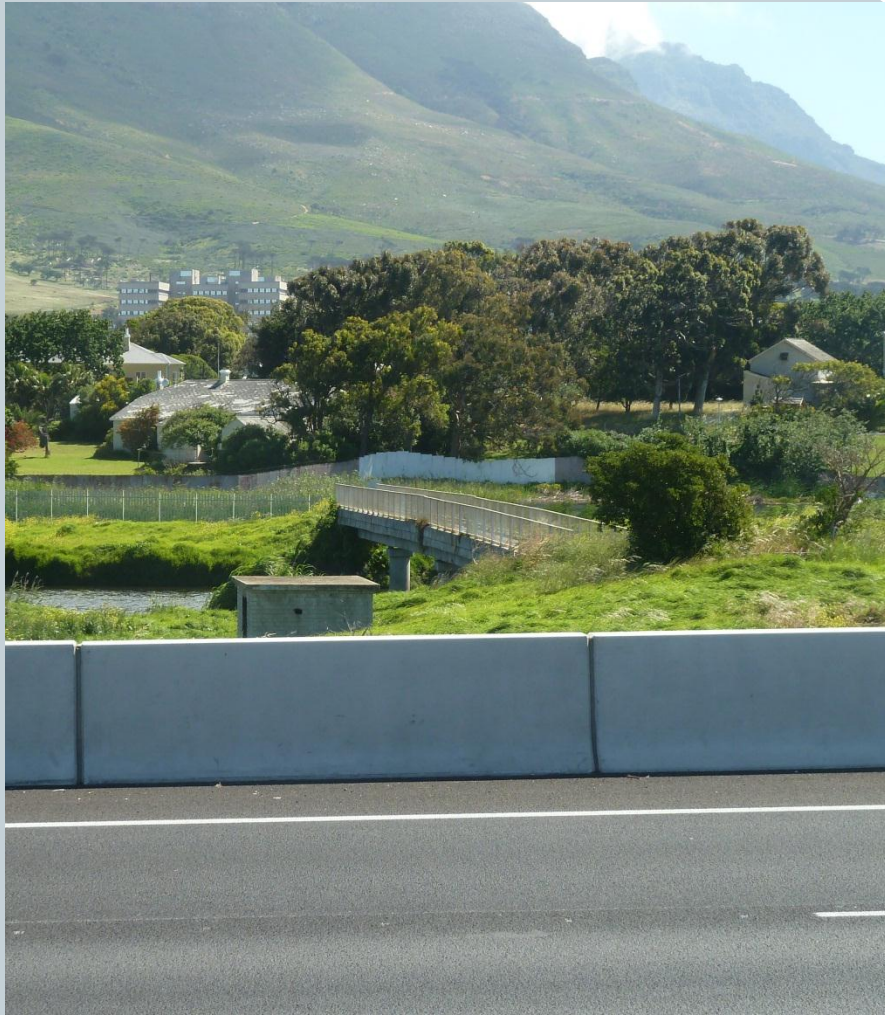
- SALT Observatory
- Raapenberg Bird Sanctuary
- Connect metro lines

Oude Molen Eco
Village

Valkenberg Bridge

Valkenberg Hospital

Old Footbridge over M5



- Used by community members to cross M5 for:
 - Hospital access
 - Wetlands
 - Pool
 - Transportation access
- During M5 update bridge was not replaced
- People walk over M5

Valkenberg Bridge



- Private auto bridge
- Restricted pedestrian access
- Best solution to pedestrian access over M5

Connecting the Lines



Moving Forward

- Working with known stakeholders
- Increasing stakeholder involvement
- Using footpaths to continue creating vision
- Agriculture business plan



Questions?

