

Maitland Garden Village Perseverance Park Design Plan



*City of Cape
Town City Parks
Department*

2013

*Cape Town
Project Centre*



WPI

Contents

Introduction.....	2
Park Design.....	3
Phase 1	5
1. Border Design Options	6
2. Landscaping	8
3. Pathways	8
4. Seating.....	9
5. Plantings.....	9
6. Enlarged Netball/Basketball Court	9
Phase 2	10
1. Sand Pit.....	11
2. Swings.....	11
3. Balancing Tyres	11
4. Seating.....	11
Phase 3	12
1. Combination Play-Structure.....	13
2. Swings.....	14
3. Balance Beam	14
4. Uneven Stepping Poles	15
5. Turn Table.....	15

Introduction

This document outlines the new design plan for Perseverance Park as well as the plan for implementation. The design was developed in coordination with the Maitland Garden Village community and the City of Cape Town City Parks Department. The goal behind this design is to transform Perseverance Park into a place for everyone to enjoy. It incorporates safe areas for children to play, seating and shade for adults and elderly, and engaging spaces for older children.

Inspiration was drawn from our research on Early Childhood Development, natural park design, and from a variety of parks around the Cape Town area. These ideas were then compiled into a catalogue of park elements titled “Park Design: Concepts and Illustrations” with the intention of stimulating innovative new plans. The elements within were then brought to the community to gather input. We were able to use this feedback to develop a design which is contained here. Images are included that indicate the elements taken from the catalogue which the community supported.

Implementation will take place in three over a span of roughly 3 years.

Phase One will run until June of 2014. The major components of this phase are:

- Formation of a community led steering committee to ensure momentum continues on the project.
- Opening communication between the City Parks Department and the community.
- Creation of a future park design with much input from the community.
- Beginning of implementation: park border designs, pathway formalization, and improved netball court.
- Landscape

Phase Two will take place between June 2014 and June 2015. This phase will include

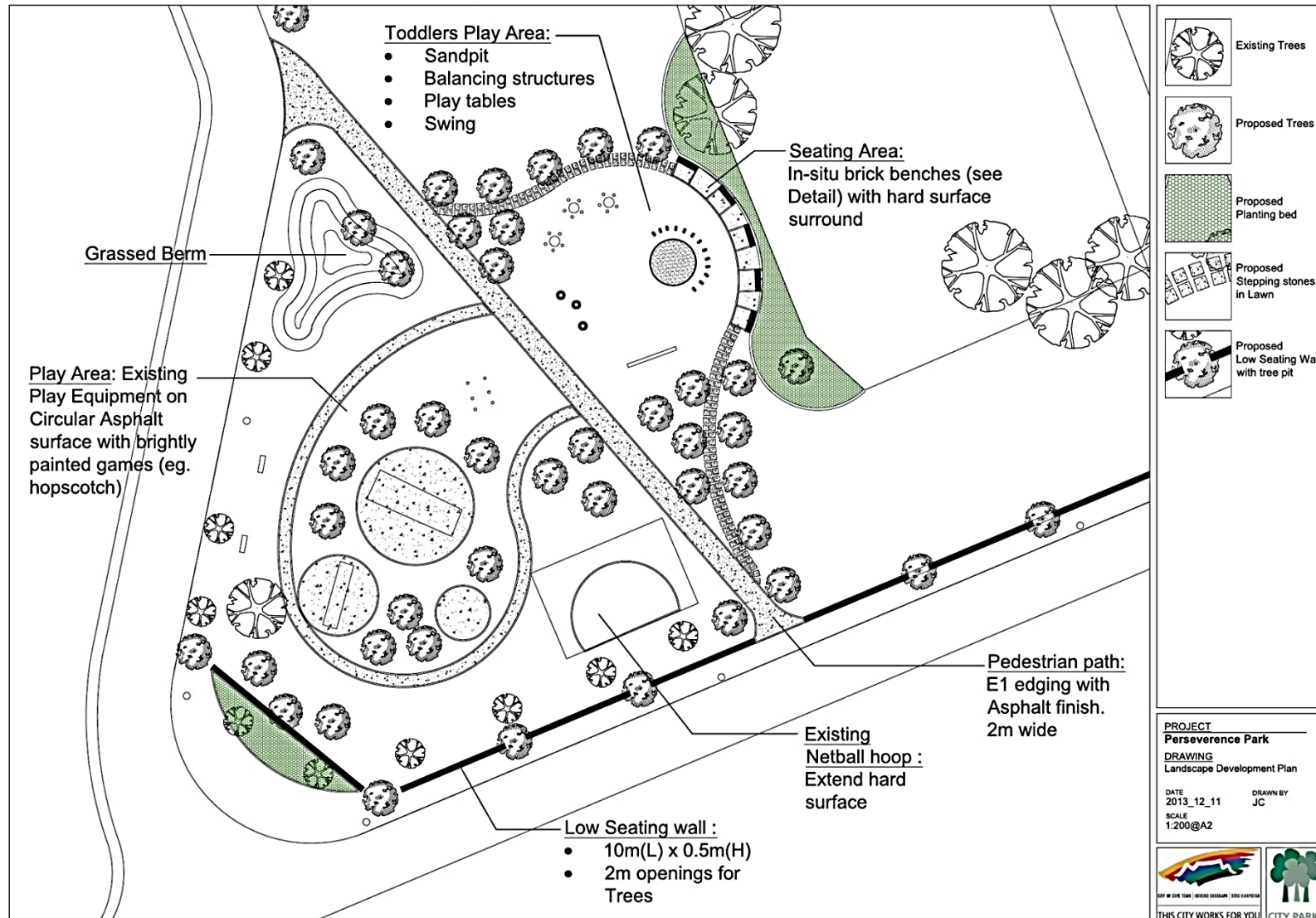
- Creation of a play area geared towards young children.

Phase Three will take place between June 2015 and June 2016. This phase will include:

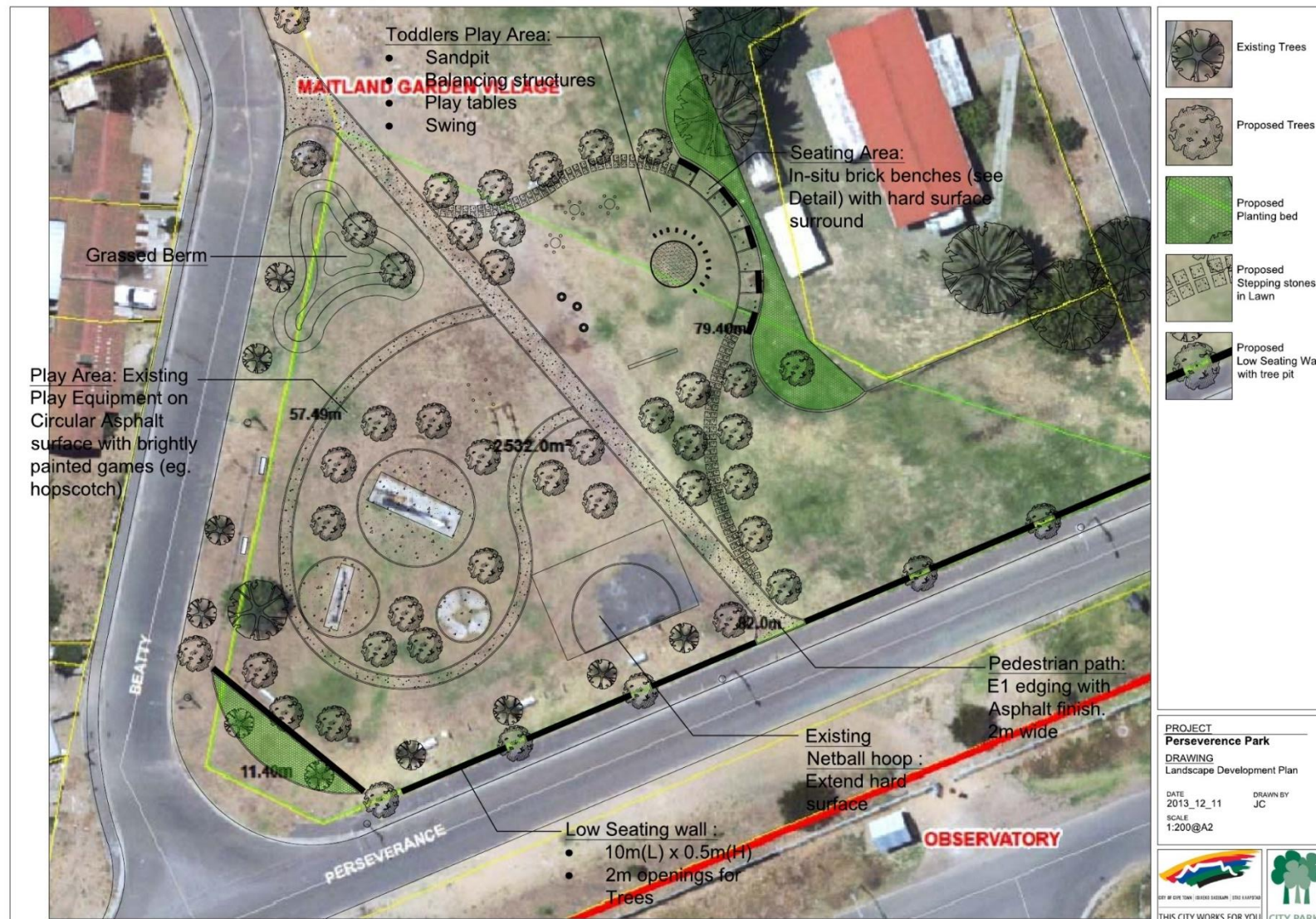
- Construction of a new play area for older children.

Park Design

Perseverance Park Design



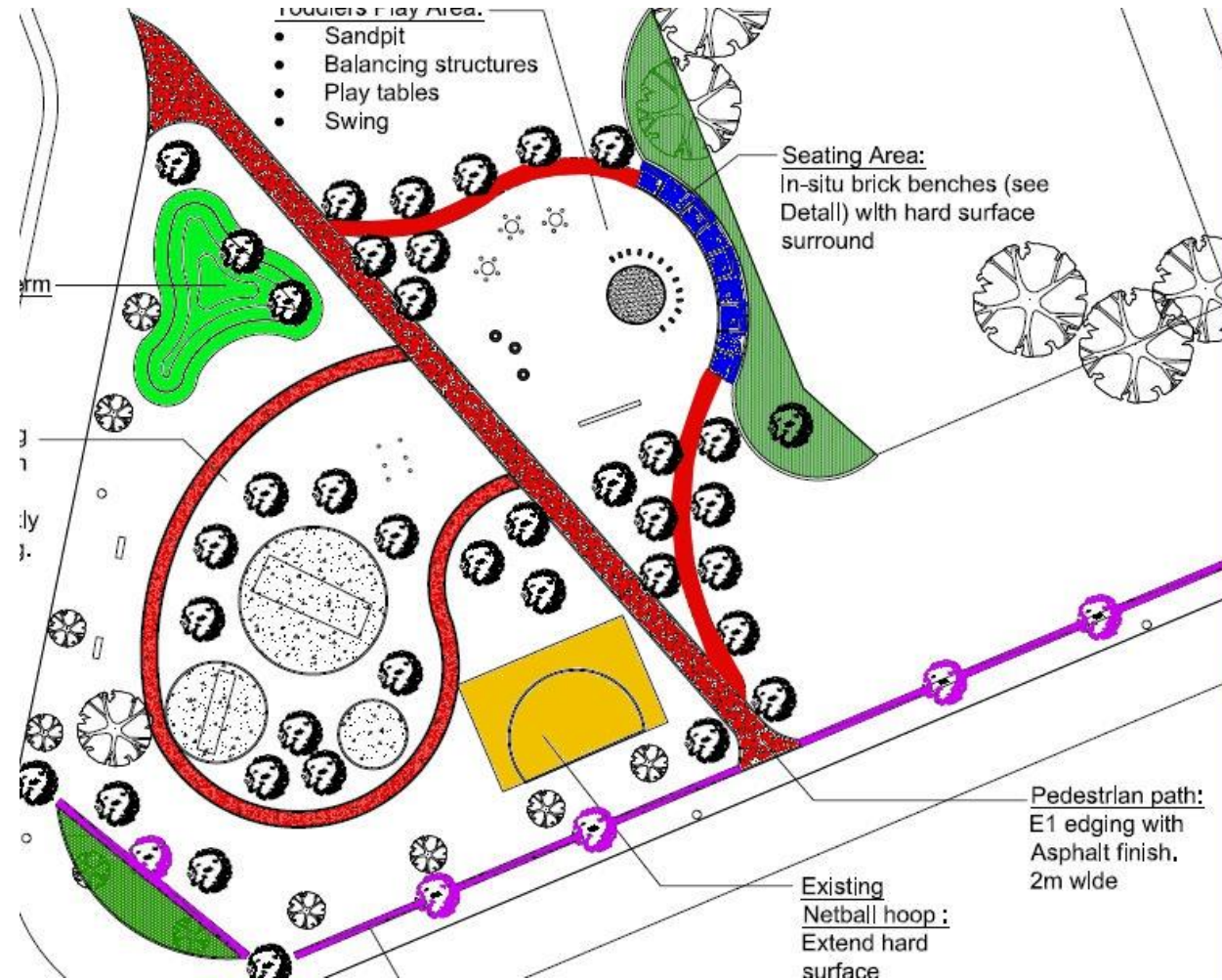
Perseverance
Park Design
with aerial park
picture as
background.



Phase 1

Elements Implemented:

1. Barrier (pink)
2. Landscaping (light green)
3. Pathways (red)
4. Seating (blue)
5. Plantings (green)
6. Enlarged Netball/Basketball Court (yellow)

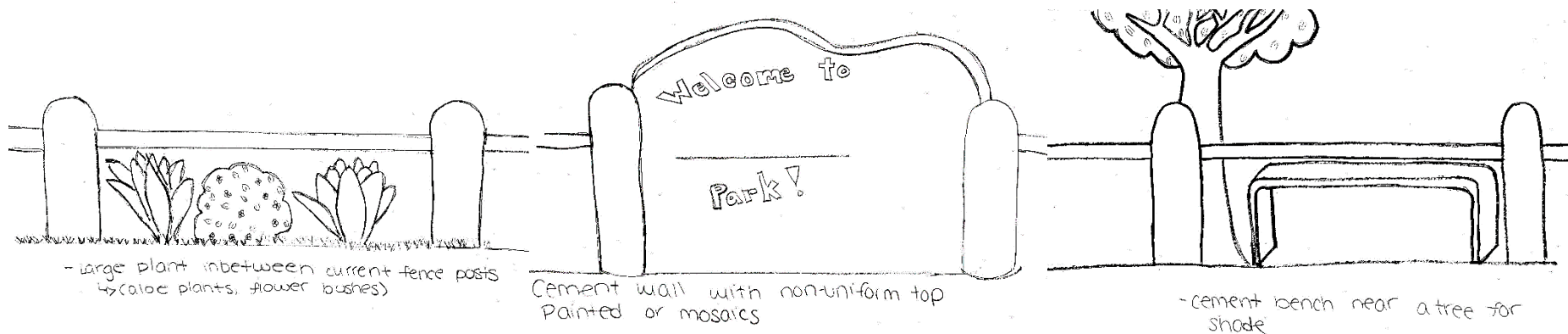


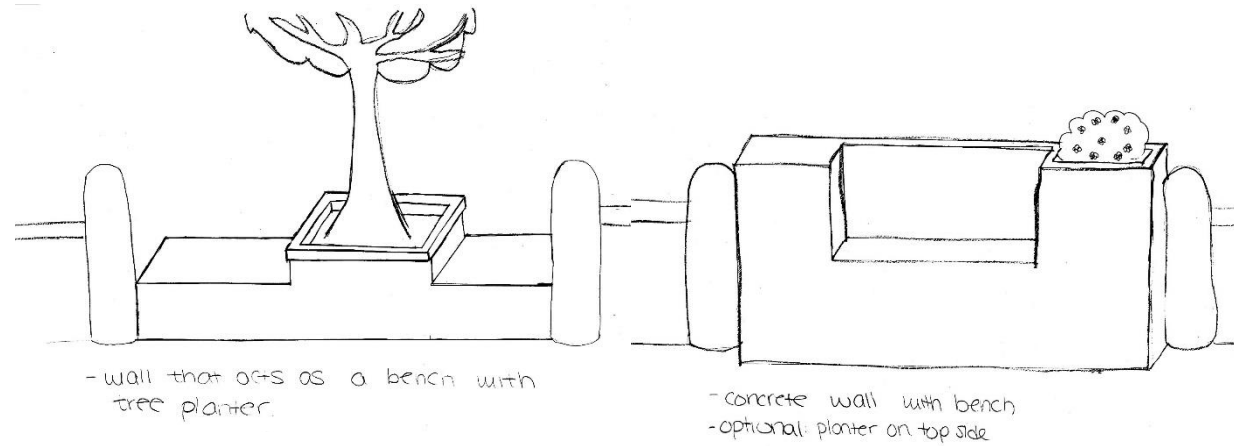
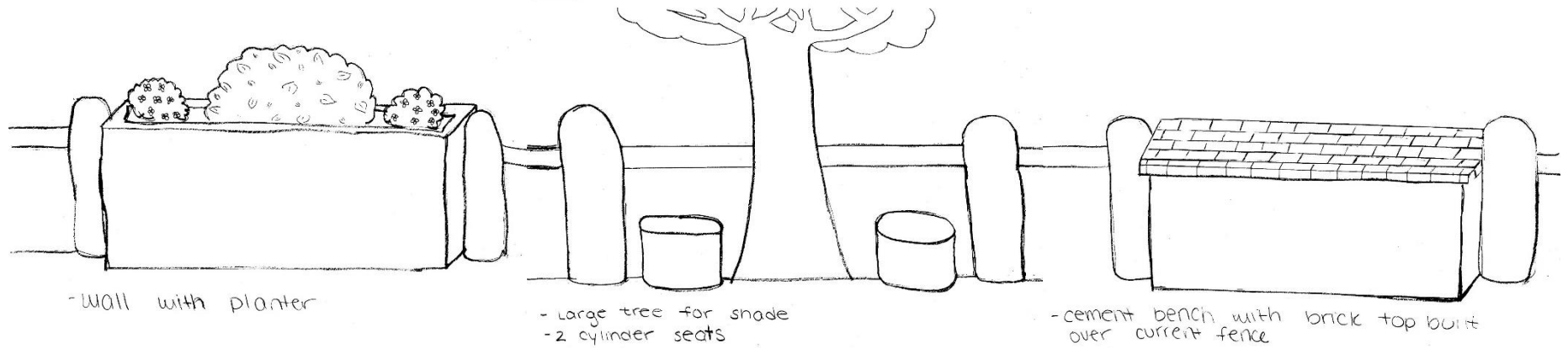
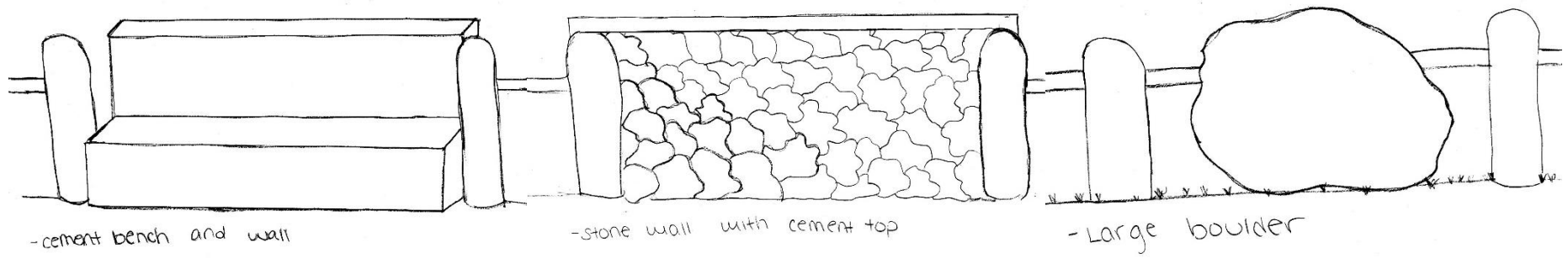
1. Border Design Options

We suggest a multi-element border design that incorporates different sections. Here are a few pictures of what different borders may look like when incorporated into the park. Included are examples of border options for different sections. To see more border options please refer to pg. 13 of our catalogue “Park Design: Concepts and Illustrations”.



These sketches are meant to show possible options and not limit other possibilities. These utilize the fence already present along the road as a starting point for creating a variety of different border options.





2. Landscaping

The park will be regraded to accommodate for the pathways and new equipment being implemented. As a part of this process, a berm (indicated in the light green) will be created. A number of trees have already been planted along with 20+ more in the final design plan and some more plants have been added to the corner of Perseverance Rd. and Beaty Ave.



3. Pathways

The main path and loop around the active play area will consist of the red gravel as shown below, bordered by bricks or other stone pavers. The path towards the seating area and around the younger children's play-space will consist of rectangular stepping stones.



4. Seating

Phase 1 seating will primarily consist of the circular seating area along the church fence. This will eventually border the small children's area and serve as a shady place to watch the children at play. For more bench seating options please see pg. 20 of the catalogue "Park Design: Concepts and Illustrations".



5. Plantings

Planting beds will consist of a combination of hardy plants, such as aloe, which are resistant to dry conditions, as well as plants grown by community members in an effort to form a community garden.

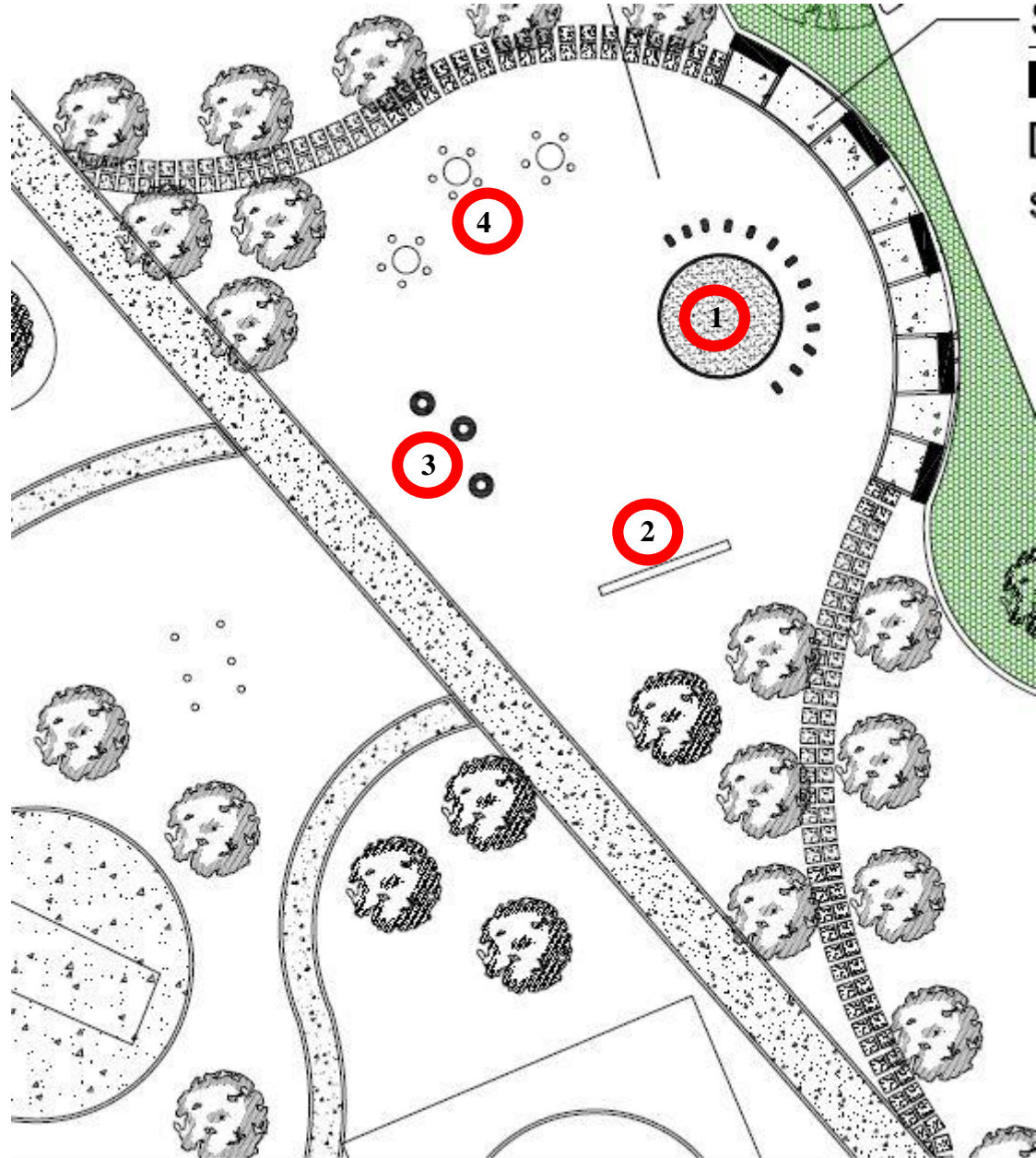
6. Enlarged Netball/Basketball Court

The current basketball court will be enlarged to a half-court length 15m x 10m (full court is 30m x 15m) with a netball hoop on one side and a basketball hoop on the other.

Phase 2

Young Children's Area

1. Sand Pit
 - ~2m in diameter lined with wood or stone for shape, bordered by half buried tyres to define the space.
2. Swings
 - Basket like seats for the small children to stay contained. Seat should be less than ½ a metre off the ground.
3. Balancing Tyres
 - Large diameter tyres to make the seat. Springs or other pivoting mechanism should be covered to prevent injury.
4. Seating
 - Circular stone benches with cylinder seating. Ideal for socializing.



1. Sand Pit



2. Swings



3. Balancing Tyres



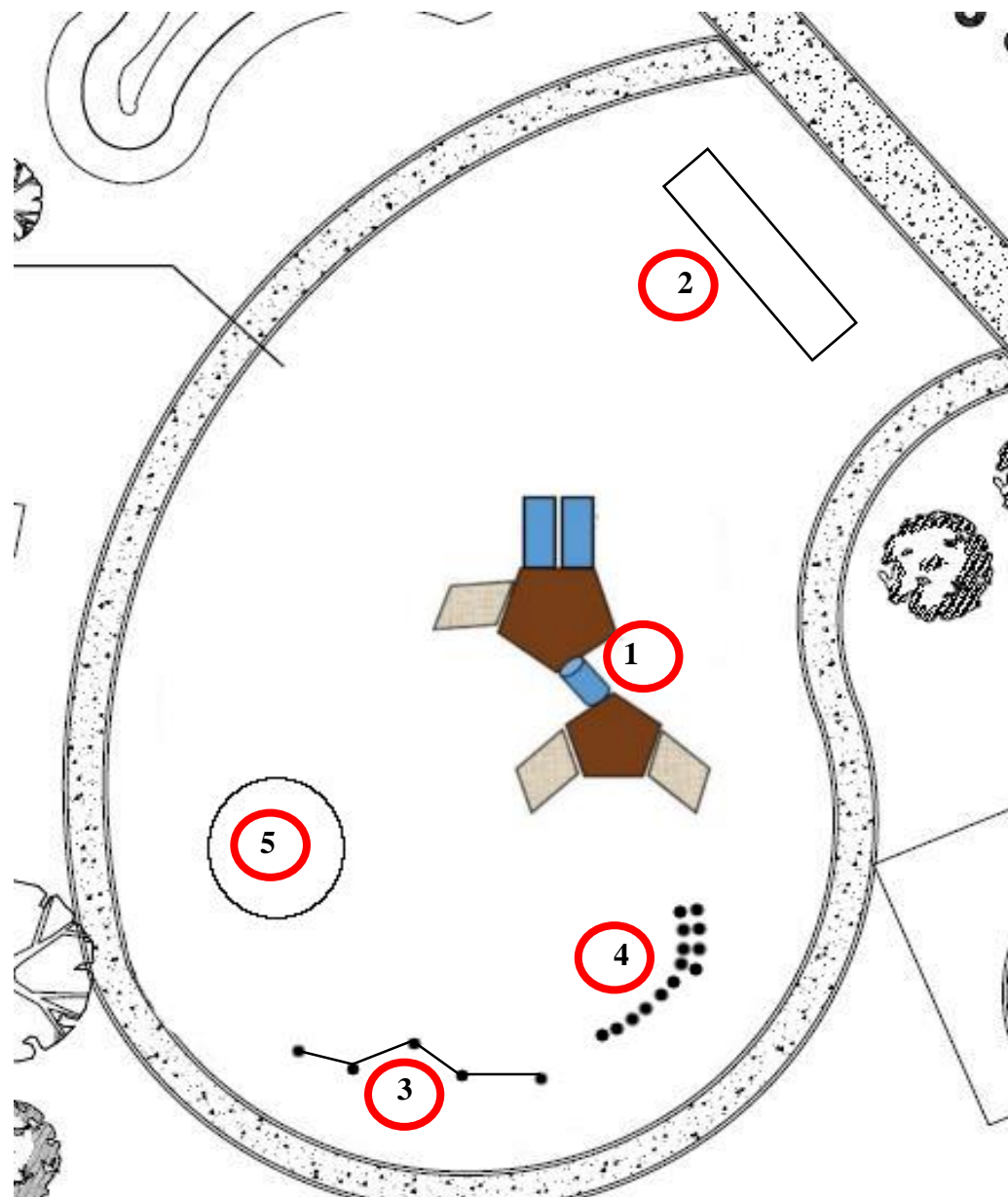
4. Seating



Phase 3

Active Play Area

1. Combination Play-Structure
2. Swings
3. Balance Beam
4. Uneven Stepping Poles
5. Turn Table



1. Combination Play-Structure



2. Swings



3. Balance Beam



4. Uneven Stepping Poles



5. Turn Table

