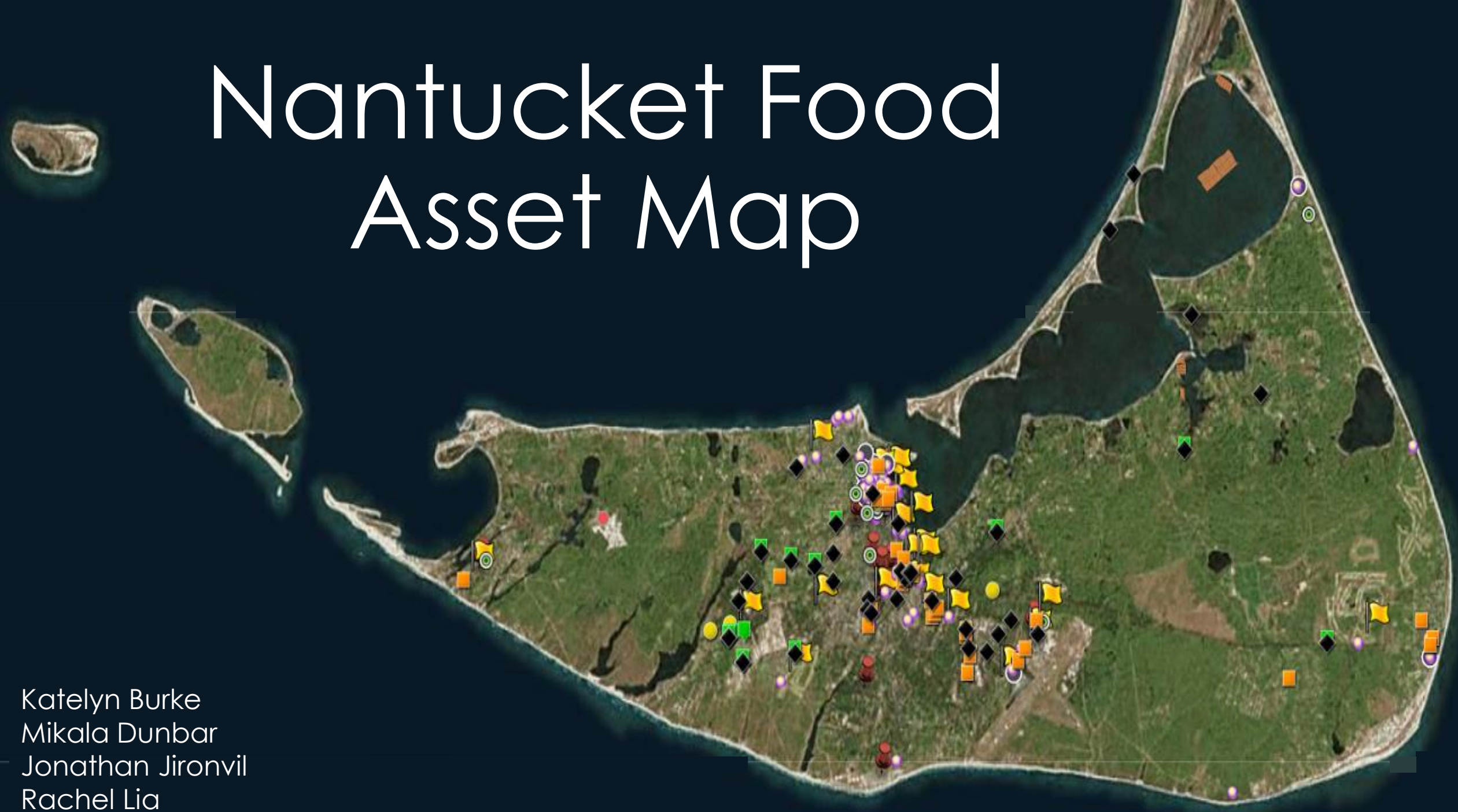


Nantucket Food Asset Map

Katelyn Burke
Mikala Dunbar
Jonathan Jironvil
Rachel Lia



Comprehensive Food System Assessment

Food Asset:

Location where a community grows, prepares, shares, buys, receives, or learns about food.



**NANTUCKET
FOOD • FUEL • RENTAL
ASSISTANCE**

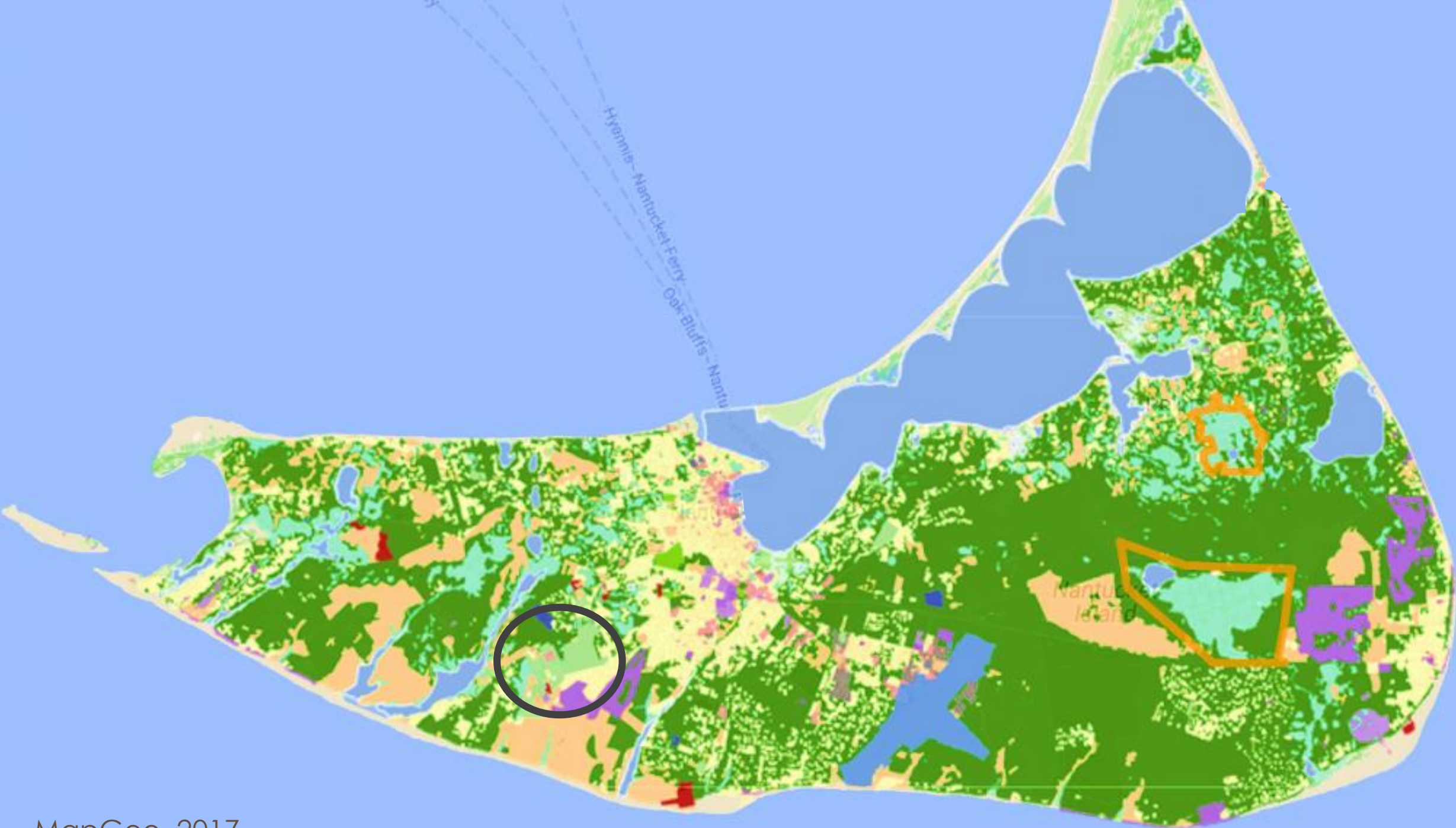
COMMUNITY • COMPASSION • CONFIDENTIALITY

SERVICES OF THE NANTUCKET INTERFAITH COUNCIL

Overview

- ❖ Sustainability & Nantucket
- ❖ Our Approach
- ❖ Production
- ❖ Distribution
- ❖ Consumption
- ❖ Waste
- ❖ Food-Focused Programs
- ❖ Update & Maintenance Plan





Identify best
practices

Background

Interviews

Clarify map
details

Content
and format

Sponsor
discussions

Build a map
and
database

Database

Online map

Analyze
Nantucket's
food network

Food waste

Food
focused
programs

Develop a
strategy to
keep the
map current

User
manual

Student
update
plan

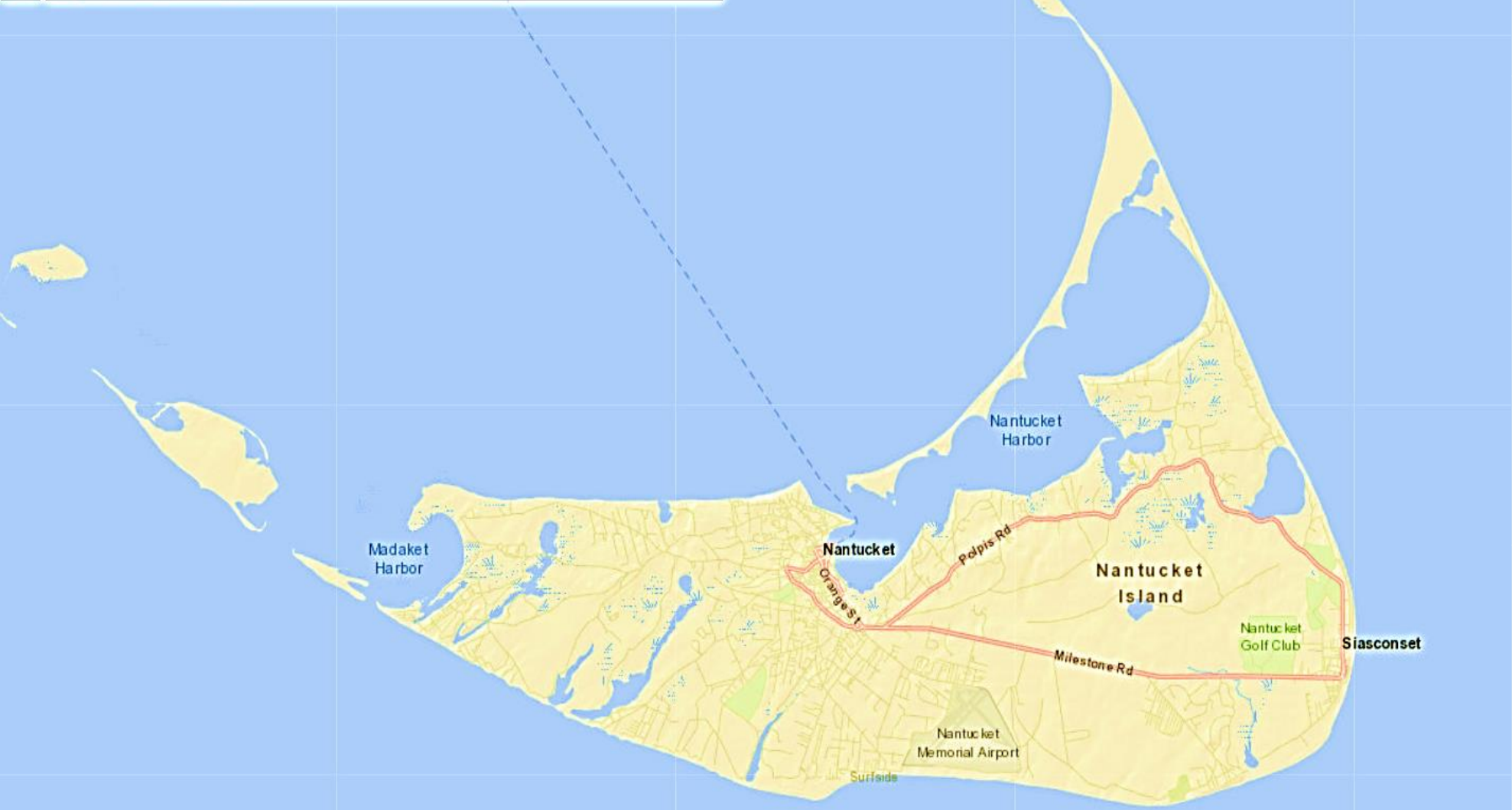
+

↑

—

Nantucket Food Asset Map

Q



Layers

Producers

Agricultural Farms

Aquaculture

Distributors

Storage

Restaurants

Lodging

Caterers

Commercial Kitchens

Waste Facilities

Food-Focused Organizations

Production

Producers

Moors End Farm

Name	Moors End Farm
Address	40 Polpis Road, Nantucket, MA
Phone Number	508-228-2674
Contact	
Email(s)	moorsendfarm@gmail.com absolsek@earthlink.net
Produce/Products	eggs, fruits, vegetables, seedlings, flowers, horticultural plants
Availability	Produce available at farm
SN Small Farm Delivery service	No
CFI Farmer	No
Attends Farmers and Artisans Market	No
Website Link	More info

Madaket
Harbor

Siasconset

Nantucket
Memorial Airport

Surfside

Agricultural Farms



Aquaculture

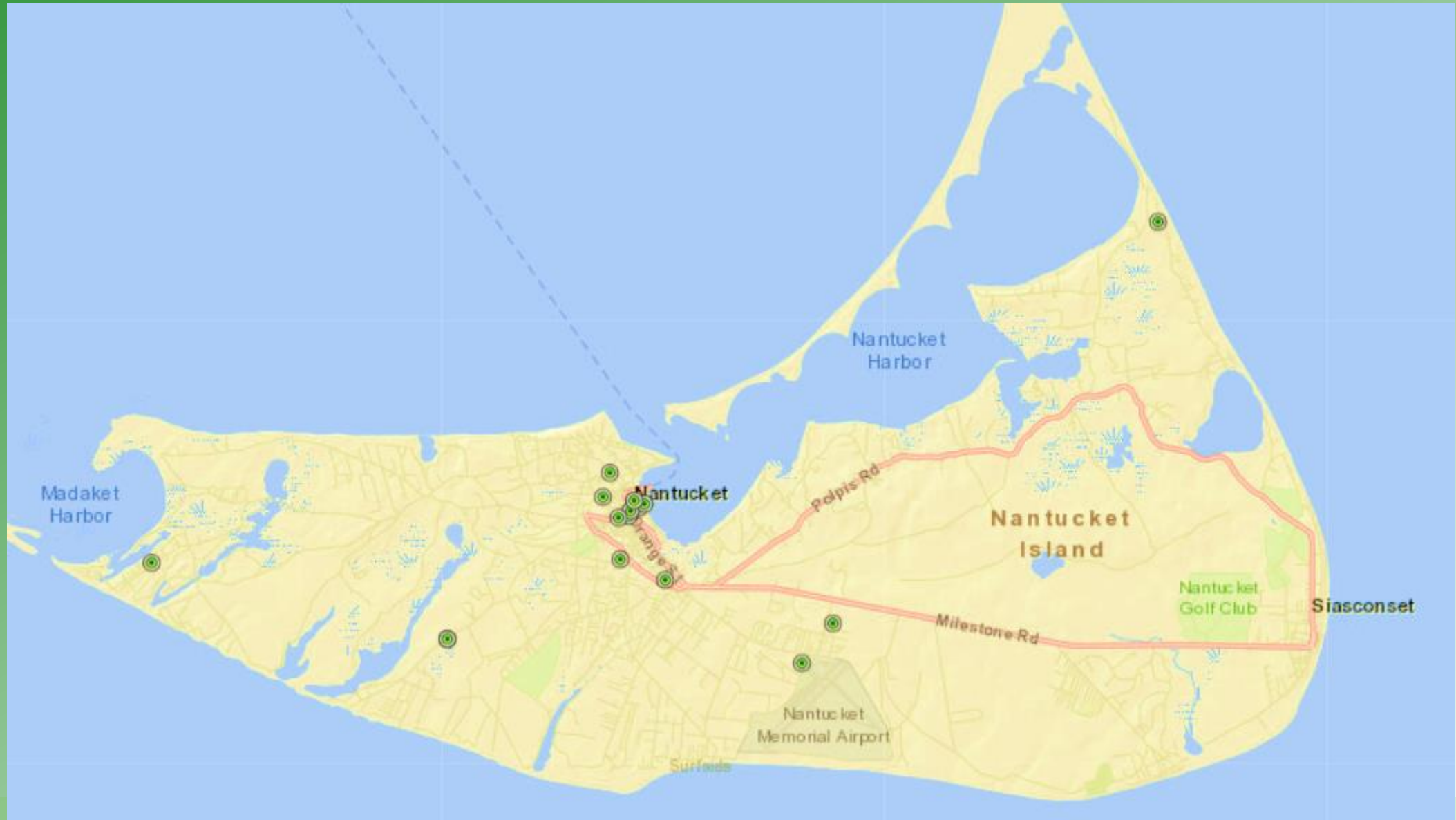


Distribution

Distributors



Storage



Contributors

ie. farmers,
Food Rescue,
producers



Receivers

ie. Food Pantry, other
outreach organizations



Food Service

ie. restaurants,
caterers, inns, hotels



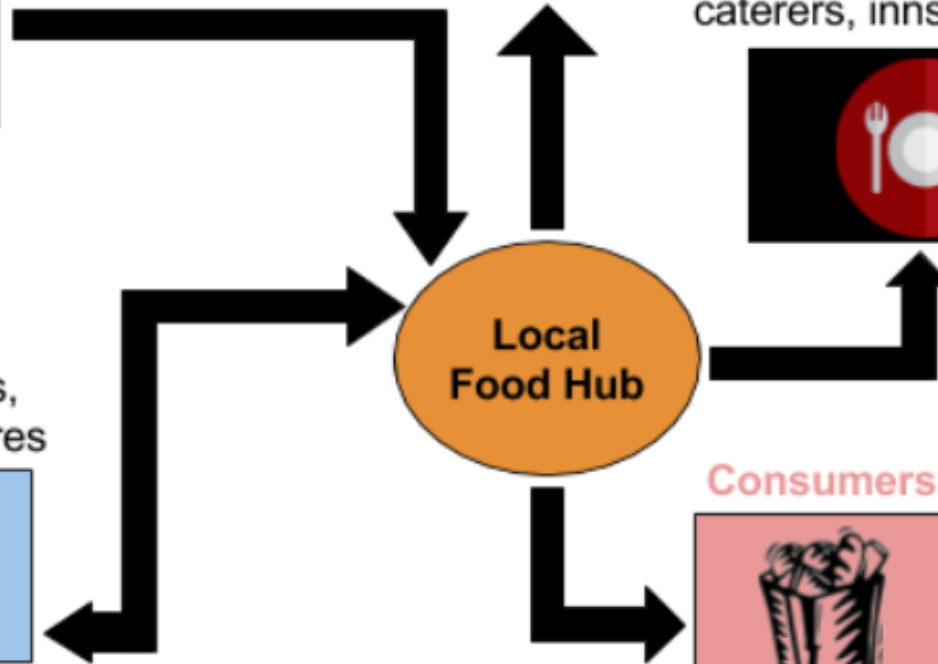
Distributors

ie. grocery stores,
convenience stores



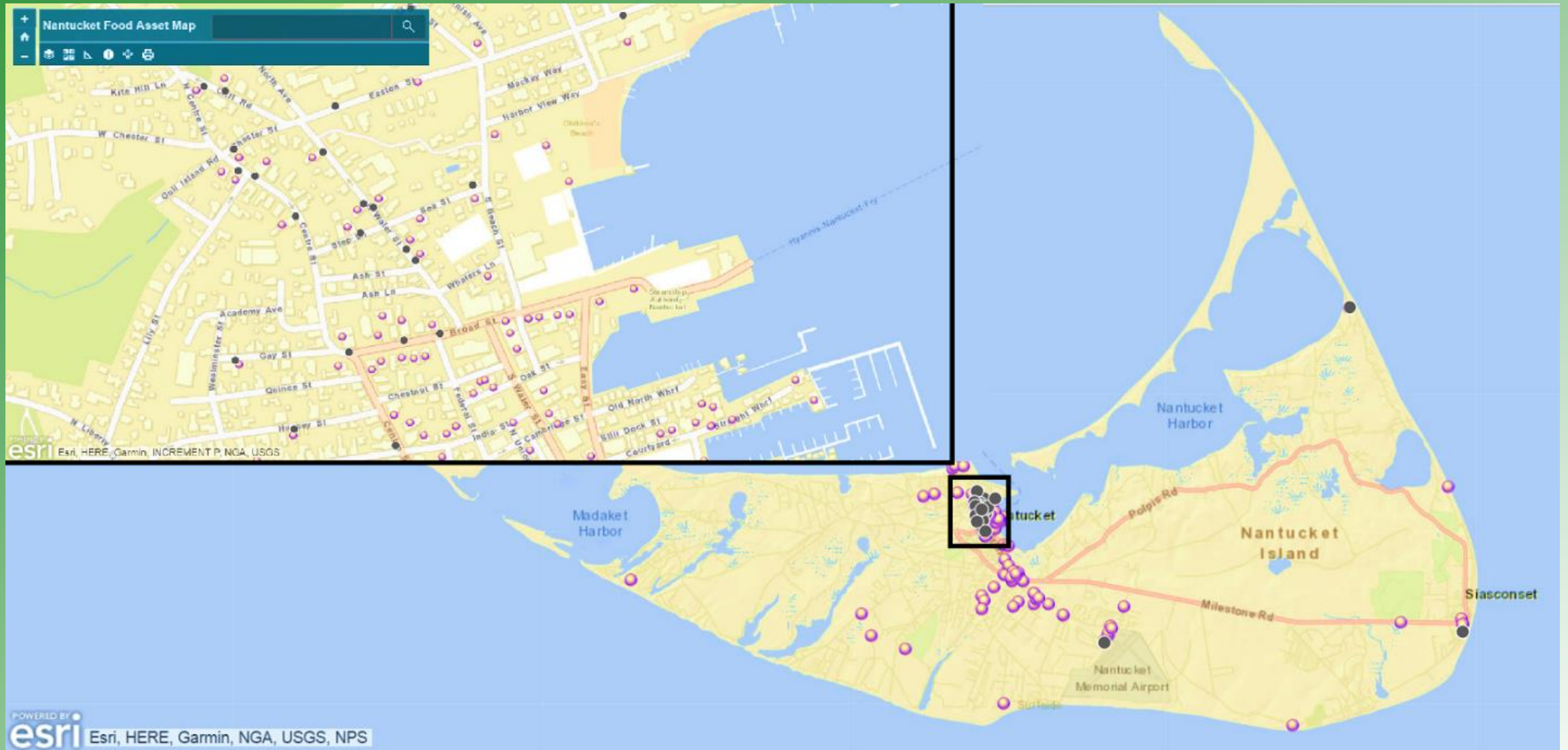
Local
Food Hub

Consumers

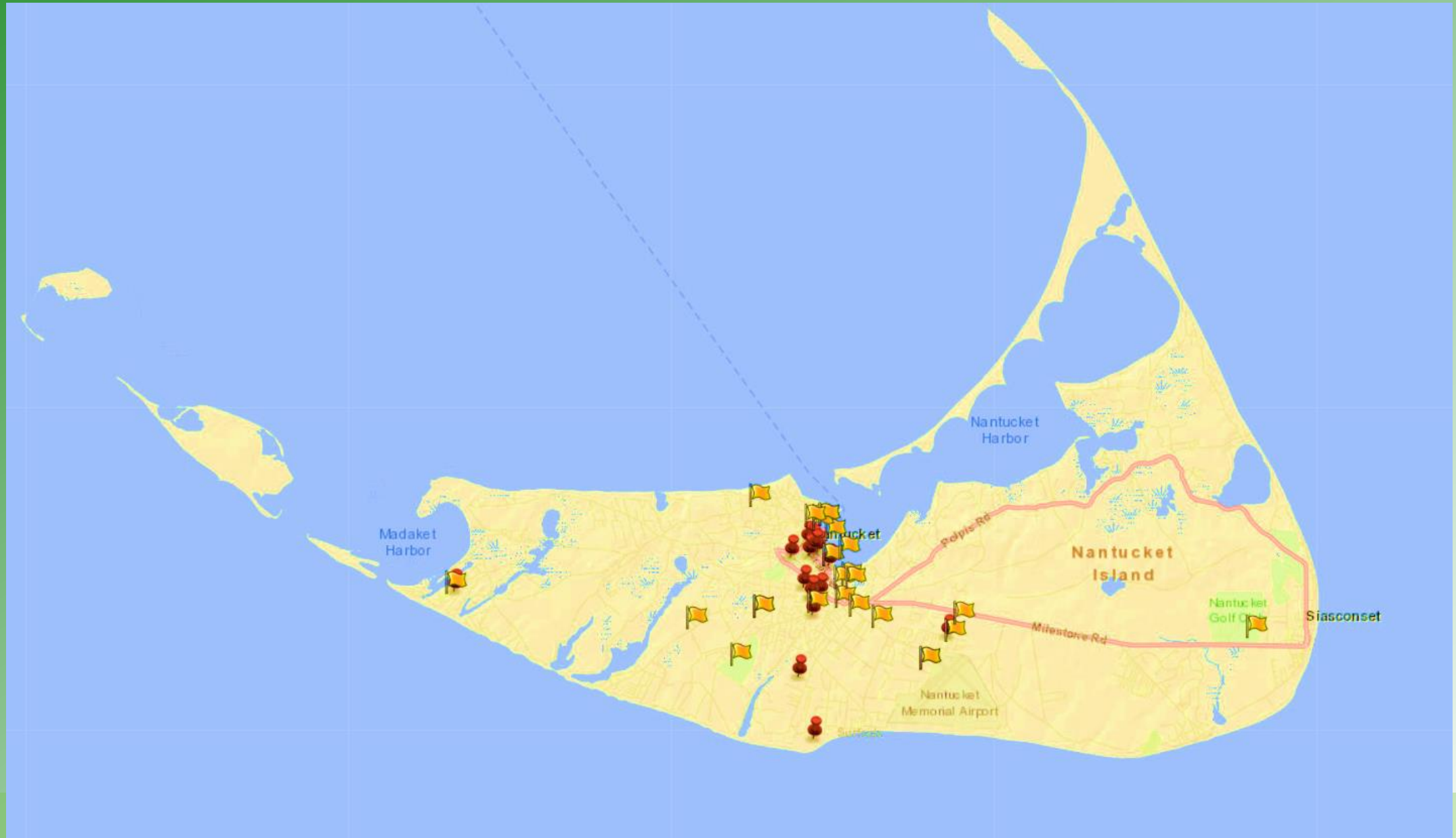


Consumption


Restaurants and Lodging



Commercial Kitchens and Caterers



Promoting Local Food

	NantucketGrown™ Certification Levels			
	Gold	Silver	Bronze	None
Number of Restaurants	14	10	6	129

Food Donation Expansion

- Commercial kitchens
- Online food donations



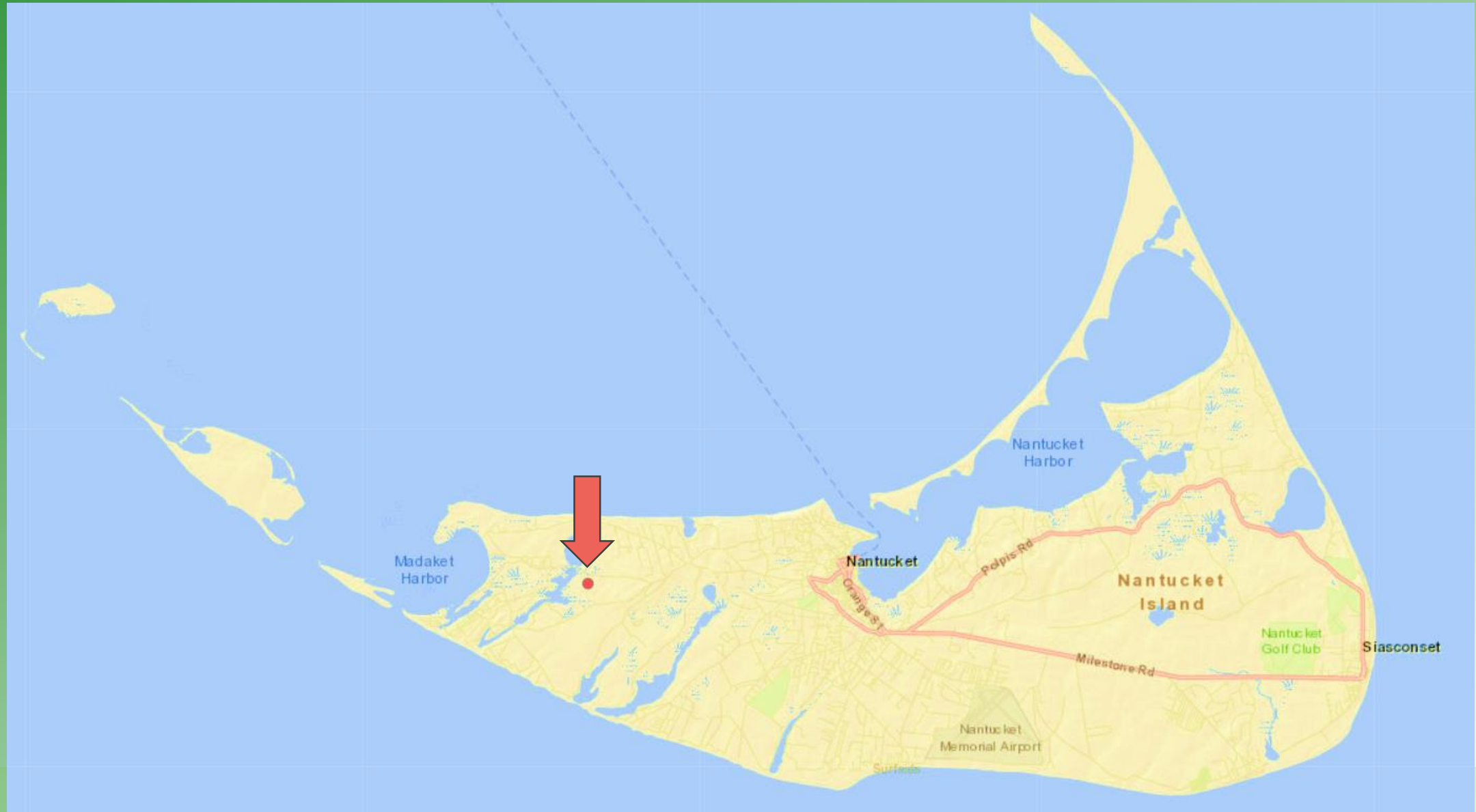
**NANTUCKET
FOOD•FUEL•RENTAL
ASSISTANCE**

COMMUNITY • COMPASSION • CONFIDENTIALITY

SERVICES OF THE NANTUCKET INTERFAITH COUNCIL

Waste

Waste Facility



Food-Focused Programs

Gleaning



Share Your Harvest



**NANTUCKET
FOOD • FUEL • RENTAL
ASSISTANCE**

COMMUNITY • COMPASSION • CONFIDENTIALITY

SERVICES OF THE NANTUCKET INTERFAITH COUNCIL



<https://static.pexels.com/photos/5205/food-healthy-vegetables-potatoes.jpg>

Food For Fines Program



<https://upload.wikimedia.org/wikipedia/commons/c/c2/NantucketAtheneum.JPG>



**NANTUCKET
FOOD•FUEL•RENTAL
ASSISTANCE**

COMMUNITY • COMPASSION • CONFIDENTIALITY

SERVICES OF THE NANTUCKET INTERFAITH COUNCIL

WPI

Year	Cans Collected	Food Worth
2014	171	\$650.20
2015	607	\$2,358.69
2016	909	\$3,413.10
2017 (up to May)	333	\$1,112.75

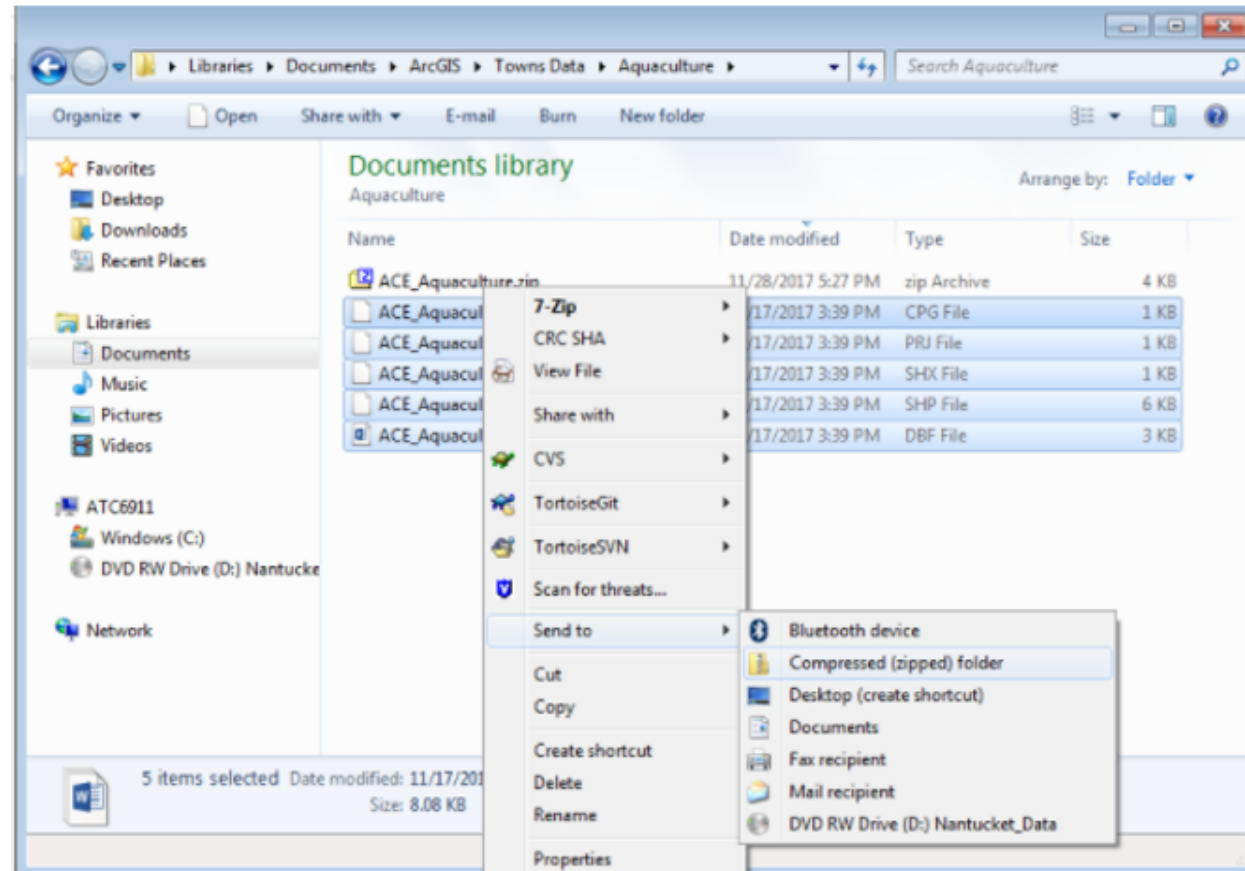
Update & Maintenance Plan

User Manual

3.1 How to upload parcel data to ArcGIS Online

1. Contact the current Nantucket Town GIS coordinator to get the most updated versions of files such as Aquaculture or land usage.
2. After acquiring the data, highlight the files needed, right click and click “Send to” then “Compressed (zipped) folder.”

It is important to note: there are limitations to how much data can upload at once. Shape files or CSV files can only upload 1000 features or 250 addresses at a time.



3. Once the data is converted to a zip file, it can be uploaded to ArcGIS Online following the instructions below in Section 4 Updating ArcGIS Online.

Database

Food Asset Map Database

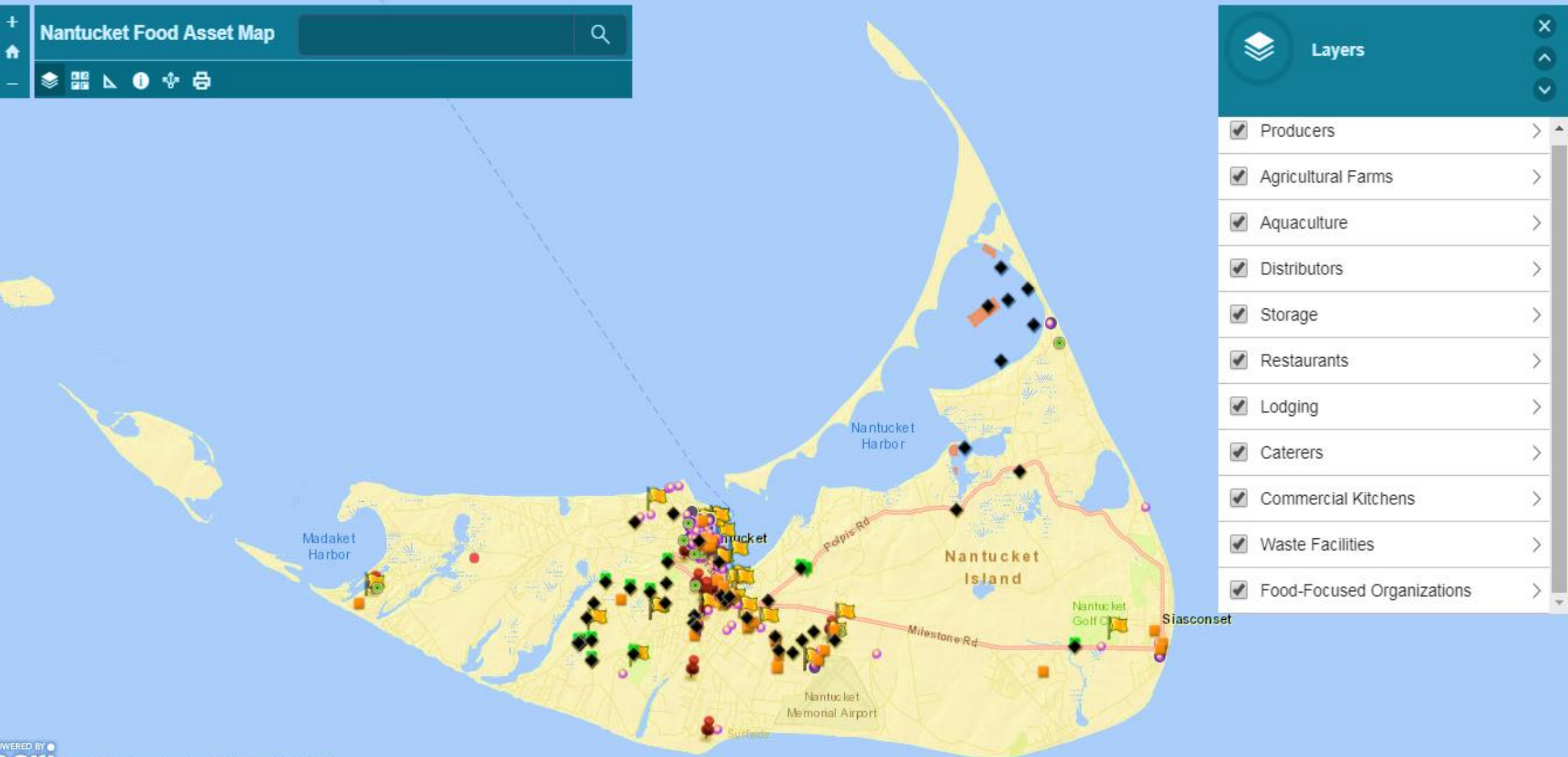
File Edit View Insert Format Data Tools Add-ons Help All changes saved in Drive

100% \$ % .0 .00 123 Arial 10 B I S A

A	B	C	D	E	F	G
Name	Address	Latitude	Longitude	Phone number	Website	Email
American Legion Post 0082	21 Washington Street, Nantucket, MA	41.2823228	-70.0969068	508-325-6677	https://www.facebook.com/pg/American-Legion-Pos	
First Congregational Church	62 North Central Street, Nantucket MA	41.2842475	-70.0998988	508-228-0950	http://www.nantuckettfcc.org/	
Homestead	115 Main Street, Nantucket, MA	41.2814325	-70.1044192	508-288-1135	http://www.thehomesteadofnantuc	homestead115@

Restaurants ▾ Food-Focused Organizations ▾ Producers ▾ Producers - Private ▾ Commercial Kitchens ▾ Oyster Farms

Map



Acknowledgements

- Sustainable Nantucket: Michelle Whelan, Yeshe Palmo, Calin Duke
- Nantucket Food Pantry: Anne Marie Bellavance
- Food Rescue Nantucket: Gary Langley
- Nantucket High School: Dan Farrell, Jed Williams, & all the students!
- Local restaurants owners who participated in the survey and interviews
- Young's Bicycle Shop: Harvey Young and staff
- Maria Mitchell Association and staff
- Nantucket Shipwreck & Lifesaving Museum
- ReMain Nantucket
- WPI Advisors: Dominic Golding, Richard Vaz

