

Advancing Community Climate Adaptation

Case Study on Resilience Centers in Puerto Rico

Will Fallon, Noah Herzig, Andrew Lufkin,
Brendan O'Mullan





Community Climate Adaptation





Community Climate Adaptation



La Goyco

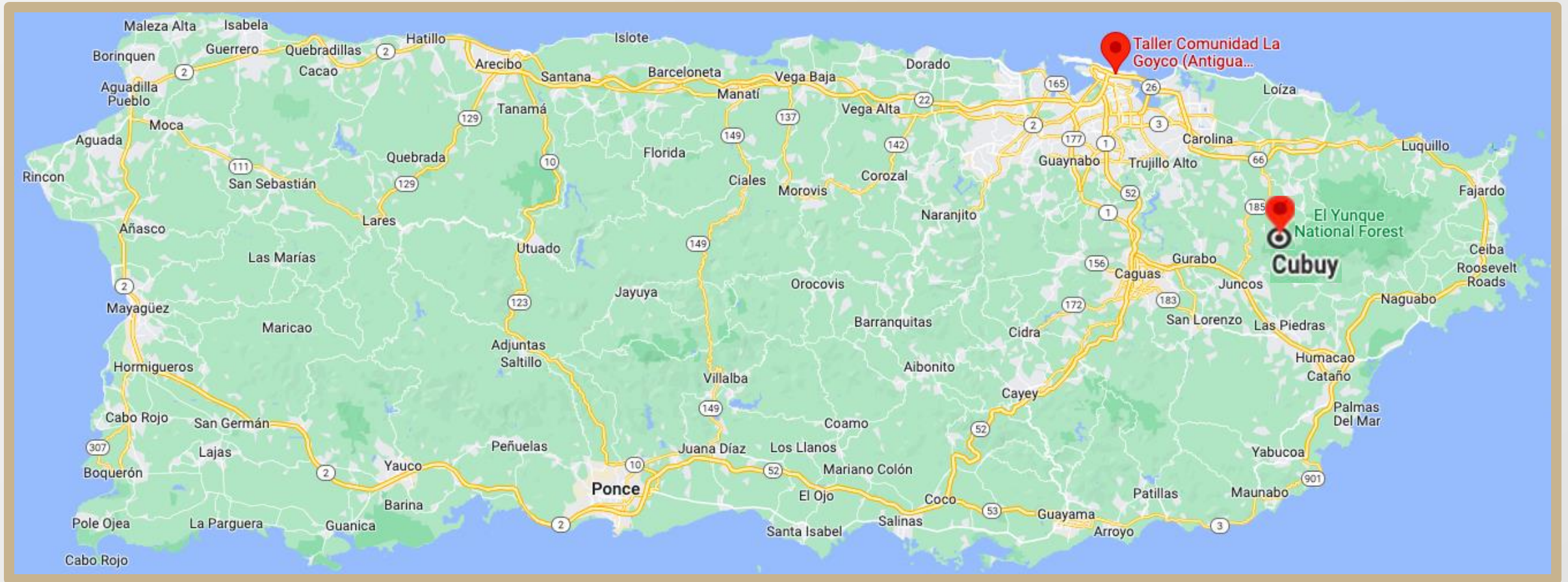
Cubuy-Lomas

La Goyco



Cubuy-Lomas





La Goyco
Coastal Region

Cubuy-Lomas
Mountainous Region

Cubuy-Lomas

Javier



Omar



Maritza



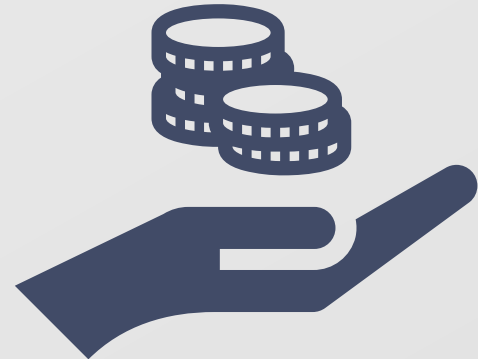
Cubuy-Lomas



CAFETERIA
ID SHALIAH
EMISARIOS DE JESU
ChefGods



Network Campaign



Website



Cubuy-Lomas
Community Services & Development Center

CENTRO DE DESARROLLO & SERVICIOS COMUNITARIOS Id SHALIAH INC.

Home Virtual Tour Programs & Services About More **Make a Donation**

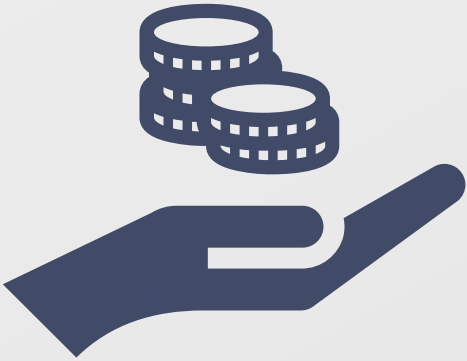
EN

Welcome to the Cubuy-Lomas Community Services & Development Center

A resilient, sustainable community hub providing relief and support to strengthen the Cubuy-Lomas community

Our mission

The screenshot shows the website's header with the organization's name and logo, a navigation menu, and a language selector. The main content area features a large purple heading and a descriptive paragraph. A green arrow points to the 'Make a Donation' button. The footer includes a purple bar with the text 'Our mission' and a small downward arrow on the right side.



Feeding The People



Javier Valedon is organizing this fundraiser to benefit ID Shaliah Inc.

Después de que el huracán María azotara a Puerto Rico en 2017, más de 400 escuelas tuvieron que ser abandonadas. En 2020, la organización sin fines de lucro, ID Shaliah, adquirió una de estas escuelas y está abriendo un centro comunitario resistente que atenderá las necesidades de los miembros de la comunidad antes, durante y después de los desastres naturales.

\$275 USD raised of \$5,000 goal

6 donations

[Share](#)

[Donate now](#)

Lufkin Family
\$200 • 57 mins

Humberto Torres
\$25 • 4 d

Andrew Lufkin
\$20 • 5 d


Matt Morvillo
\$5 • 5 d

Riley Naclerio
\$15 • 5 d

[See all](#)

La Goyco






Emergency Preparation Toolkit

Strategies and Tools for Community Emergency Preparation



Emergency Preparation Toolkit



Critical Information System (CIS)

Google Drive Based Emergency Data Management Tool

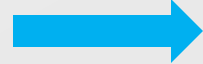


Organizational Structure

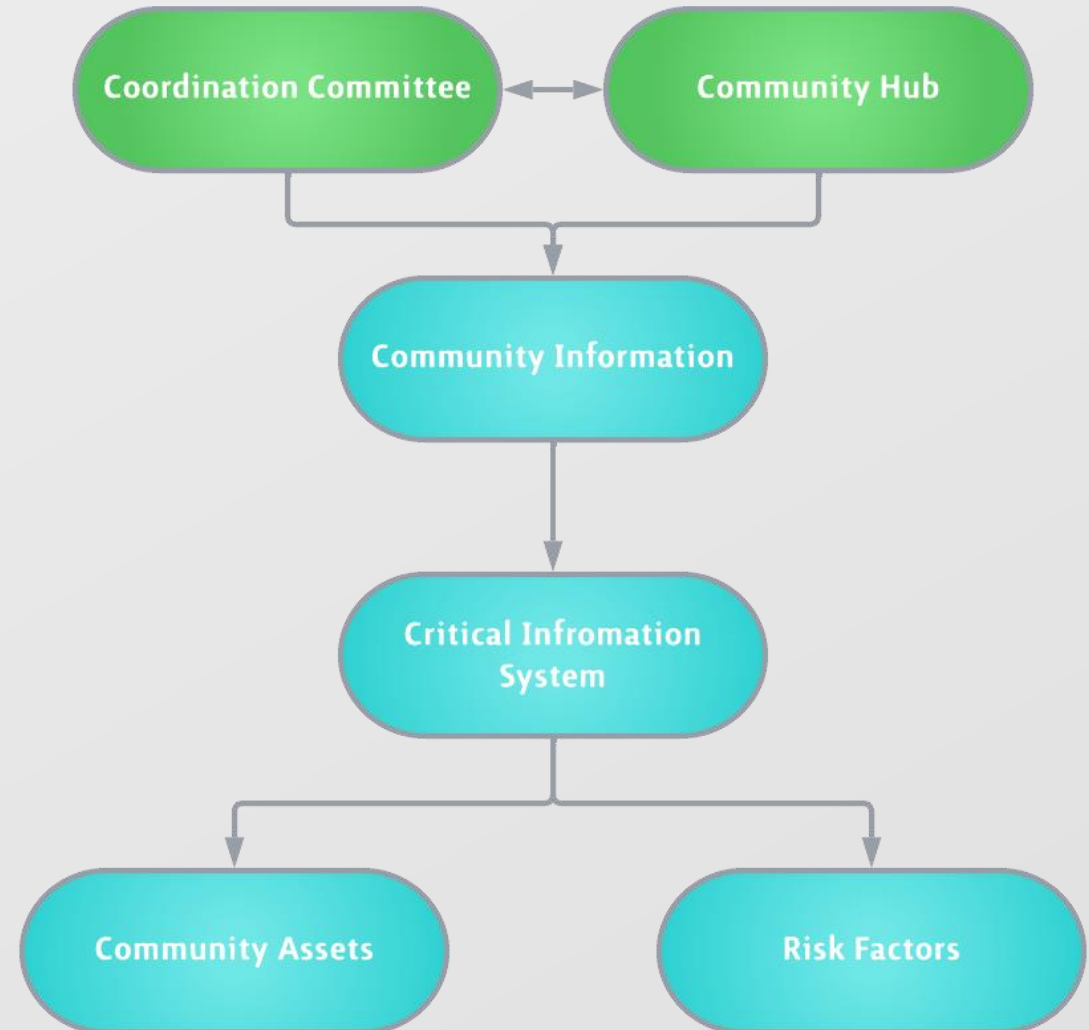
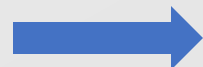
Operational System



Technical System



Understand Assets and Risks





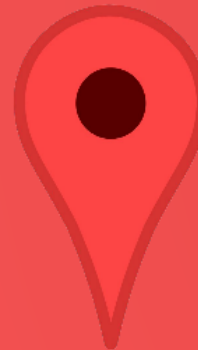
Technical Overview



**COLLECT INFORMATION USING
GOOGLE FORMS**

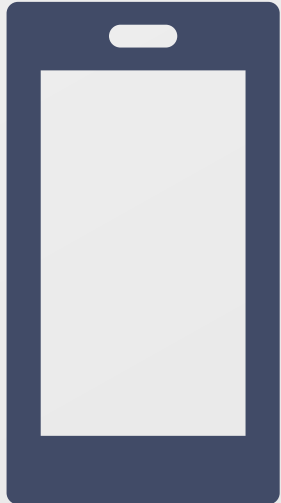


**ANALYZE THE DATA USING
GOOGLE SHEETS**



**VISUALIZE THE DATA USING
GOOGLE MY MAPS**

COLLECT INFORMATION USING GOOGLE FORMS



Community Information Survey

Este formulario será utilizado por el centro comunitario de La Goyco para evaluar los recursos y vulnerabilidades dentro de la comunidad. Todas las preguntas son opcionales. Esta información ayudará a La Goyco a prepararse y responder en caso de una emergencia. Esta información será mantenida en privado por La Goyco, comuníquese si tiene alguna pregunta.

This form will be used by the La Goyco community center to assess resources and vulnerabilities within the community. All questions are optional. This information will help La Goyco prepare and respond in case of an emergency. This information will be kept private by La Goyco, please contact if you have any questions.

wpiccan@gmail.com [Switch account](#)



Not shared

Informacion Personal/Personal Information

Información sobre usted y su familia para ayudar en caso de una emergencia.

Information about you and your family to help in the event of an emergency.

¿Nombre?

Full Name

Your answer

¿Teléfono residencial?

Residential Phone Number

Your answer



VISUALIZE THE DATA USING GOOGLE MY MAPS



The screenshot displays the Google My Maps interface. The top left shows the map title 'Untitled map' and the last edit time 'Last edit was seconds ago'. Below this are options to 'Add layer', 'Share', and 'Preview'. The map is currently set to 'Community Information Database' with a 'Uniform style' and contains 'All items (13)'. The base map is selected.

The map shows a street grid with several red location pins. A popup window is open for a specific location, displaying the following information:

Madoline Harun

Timestamp: 4/24/2023 19:36:59

¿Teléfono residencial? ... 555-5555

¿Celular? Cellular Phone 555-5555

¿Correo electrónico? E... fakeemail@fakeemals.com

¿Dirección? Home Addr... 1966 McLeary Ave, San Juan, 00911

Si no tiene una direcció... No value

¿Cuántas personas vive... 5

¿Hay personas mayores... Yes

¿Cuántas personas ma... 3

¿Hay personas menores... Yes

¿Cuántas personas me... 8

¿Alguien en tu casa nec... No

Si se necesitan pañales... No value

¿Alguien en su casa tie... Yes

¿Cuántas personas en ... 3

¿Cuántas personas en ... 6

¿Cuántas personas en ... 7

¿Cuántas personas en ... 3

¿Cuántas personas en ... 4

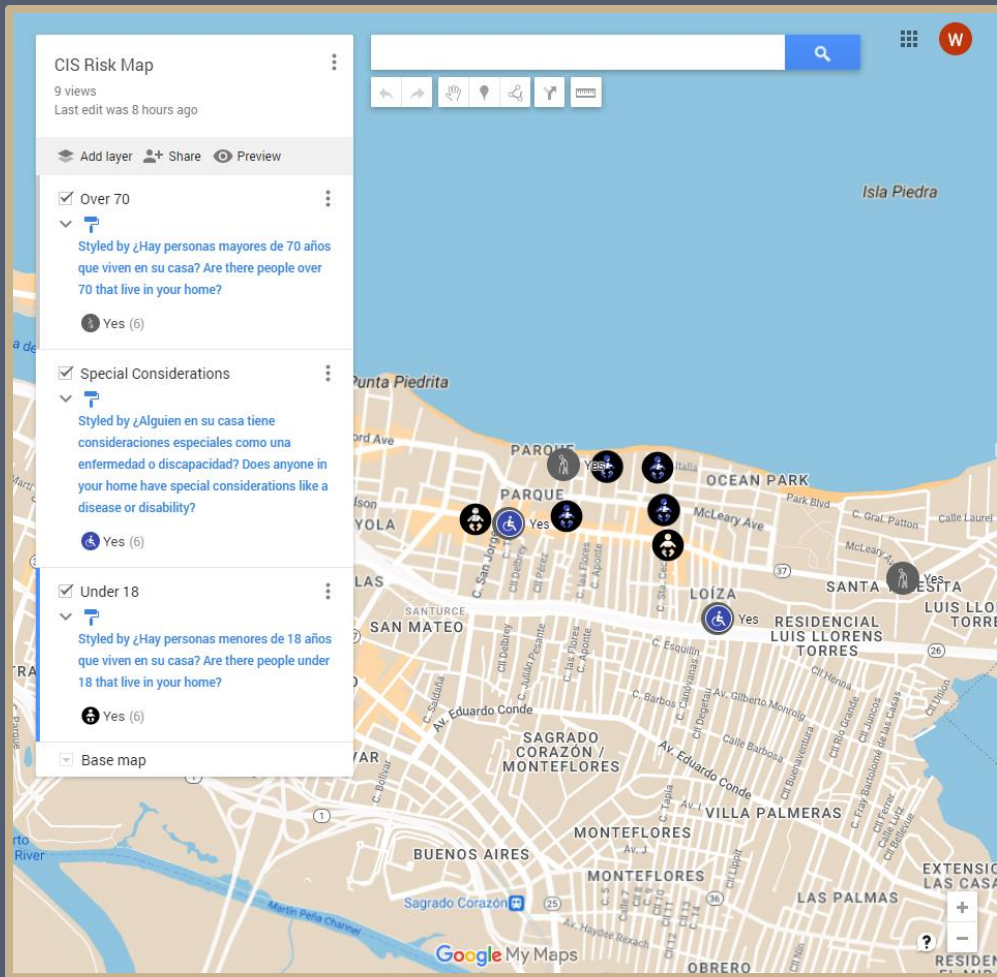
¿Cuántas personas en ... 7

Coordinates: 18.45213, -66.0547

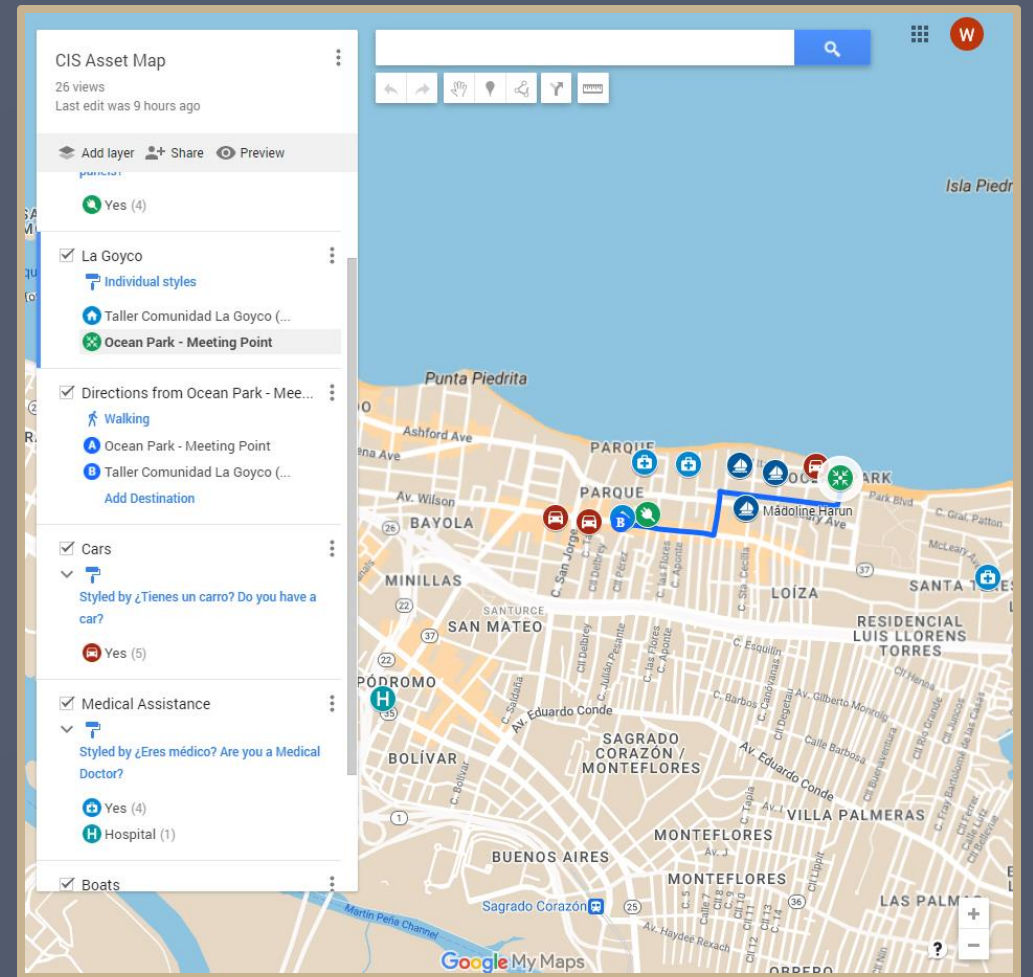
Risk Map

Asset Map

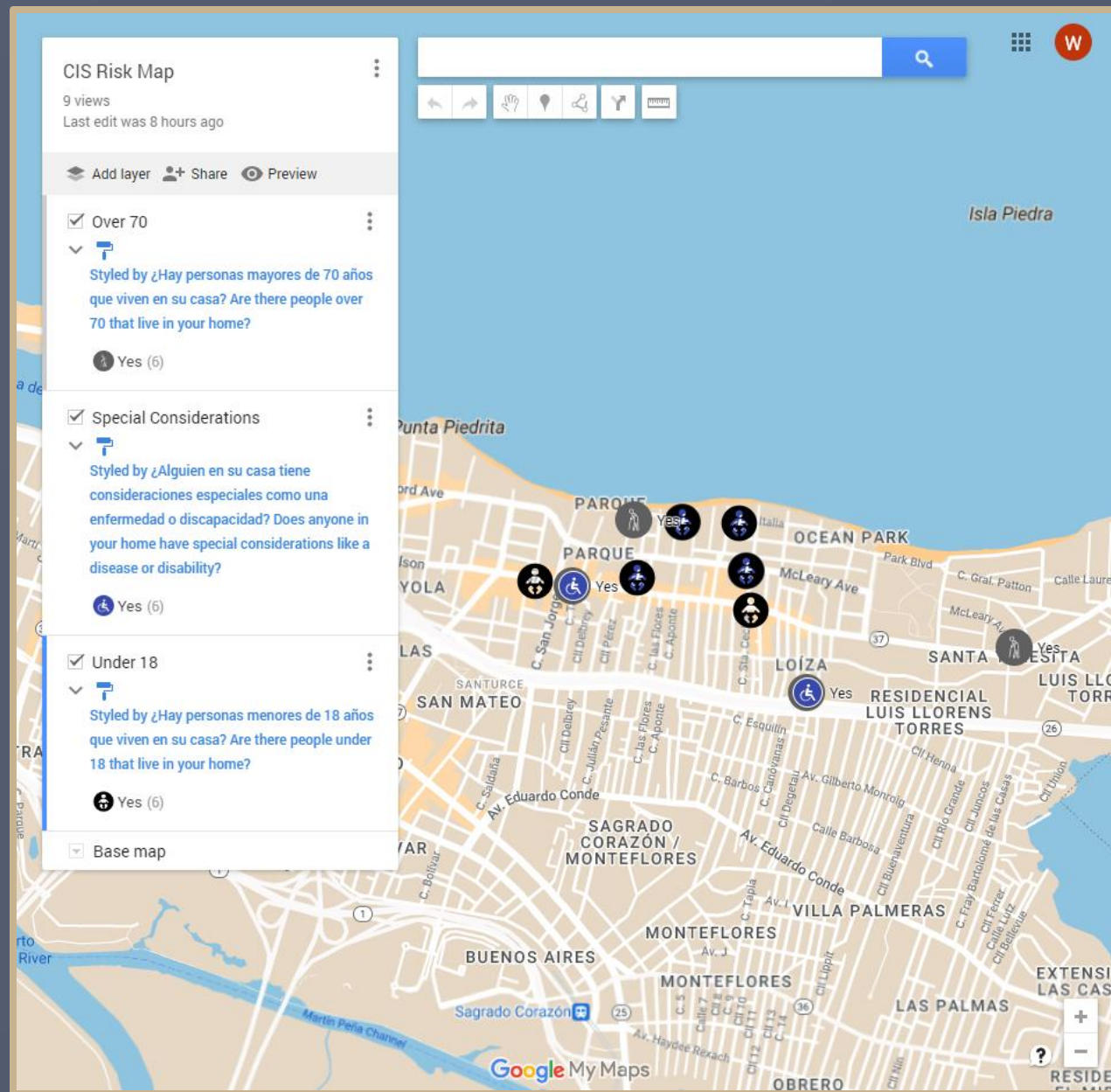
Risk Map



Asset Map



Risk Map



Asset Map

CIS Asset Map
26 views
Last edit was 9 hours ago

Add layer Share Preview

Yes (4)

La Goyco
Individual styles
Taller Comunidad La Goyco (...)
Ocean Park - Meeting Point

Directions from Ocean Park - Mee...
Walking
Ocean Park - Meeting Point
Taller Comunidad La Goyco (...)
Add Destination


Cars
Styled by ¿Tienes un carro? Do you have a car?
Yes (5)

Medical Assistance
Styled by ¿Eres médico? Are you a Medical Doctor?
Yes (4)
Hospital (1)

Boats

Google My Maps

Emergency Preparation Toolkit



Emergency Preparation Checklist

Puerto Rico All-Hazards Plan Disaster Preparation Checklist

- Puerto Rico Department of Public Safety
 - Puerto Rico Emergency Management Bureau
- 

Emergency Preparation Checklist

Emergency Preparation Checklist		
Core Capabilities	La Goyco	Cubuy-Lomas
1. Developed Action Plan	+	×
2. Situational Awareness Assessment	✓	✓
3. Joint information system and center	+	×
4. Basic Communication	✓	+
5. Coordination between stakeholders and commonwealth	+	+
6. Adequate Response Capabilities	+	×
7. Critical Transportation Services	×	×

Key	
Yes	✓
No	×
In Progress	+

Moving Forward

- Implementation of the Emergency Preparation Toolkit
- CIS System
 - Risk Map
 - Asset Map
- ESF Checklist
 - Hurricane Preparation

- Extend the use of social media
 - GoFundMe page
 - Cubuy-Lomas Website
 - Establish relationships with other organizations





Thank You

Donate to Cubuy-Lomas Center



Visit the Cubuy-Lomas website



“YES WE DID!”

Donate to Cubuy-Lomas
Center



Visit the Cubuy-Lomas
website

